



# Annual Governor Report to Parents



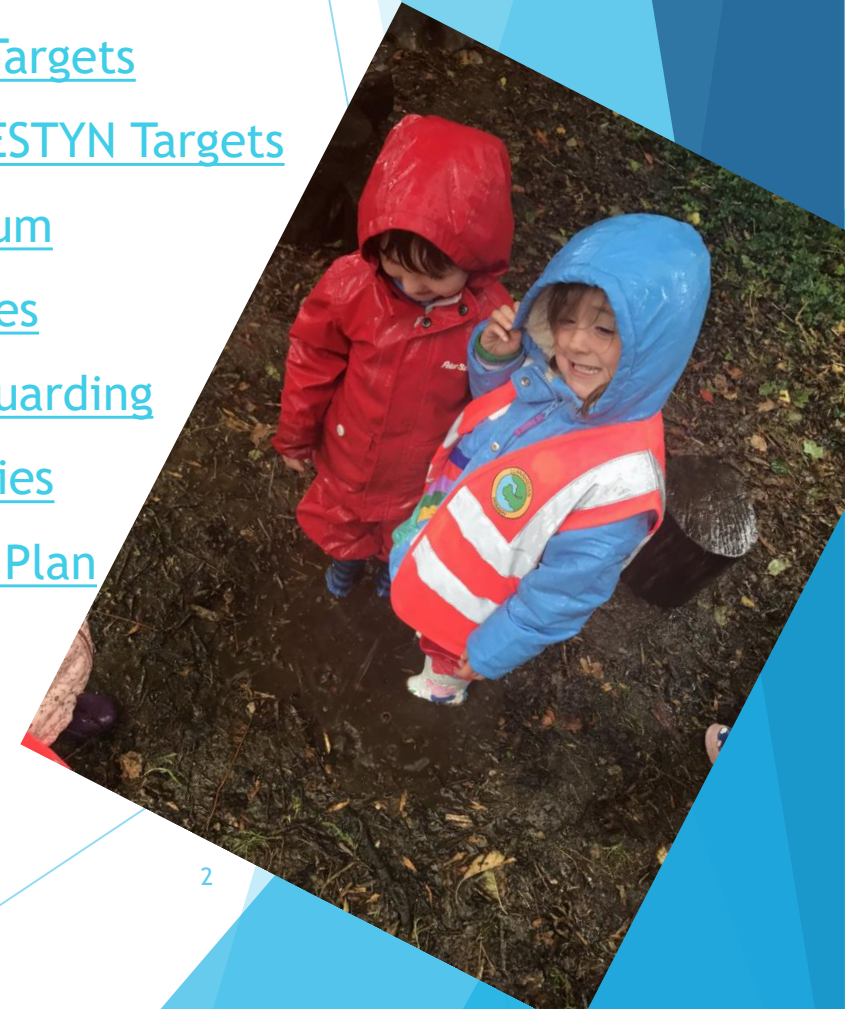
Llanrhidian Primary School

Autumn 2020

# Welcome to the 2020-2021 Governors' Report to Parents & Carers

## Contents

- ▶ [Introduction](#)
- ▶ [Governing Body Structure](#)
- ▶ [Staffing Structure](#)
- ▶ [Pupil Numbers](#)
- ▶ [Children's Rights](#)
- ▶ [School Performance](#)
- ▶ [Assessment](#)
- ▶ [Attendance](#)
- ▶ [ALN](#)
- ▶ [ALN Register](#)
- ▶ [IEPs](#)
- ▶ [Welsh](#)
- ▶ [Sport](#)
- ▶ [Breakfast Club](#)
- ▶ [Pupil Voice](#)
- ▶ [School Council](#)
- ▶ [School Finances](#)
- ▶ [Community Links](#)
- ▶ [School Prospectus](#)
- ▶ [Session Times](#)
- ▶ [Secondary School](#)
- ▶ [Moral & Social](#)
- ▶ [Curriculum for Wales](#)
- ▶ [Four Purposes](#)
- ▶ [SDP Targets](#)
- ▶ [Progress on Targets](#)
- ▶ [Progress on ESTYN Targets](#)
- ▶ [Our Curriculum](#)
- ▶ [School Policies](#)
- ▶ [H&S & Safeguarding](#)
- ▶ [Toilet Facilities](#)
- ▶ [Accessibility Plan](#)



# Introduction

[Back to Table of Contents](#)

Once again I am delighted, on behalf of your Governors, to commend to you this report covering the achievements, progress and important developments made by our outstanding school during the last year.

Inevitably, the on-going health emergency and the necessary consequential actions have cast a long and deep shadow over all we have done. It's a testament to the total dedication and professional commitment of our exceptional Head Teacher and her staff that the adverse impact on our children's learning and their well being has been minimised as much as possible. You too have played a vital part in this outcome and you have your governor's gratitude for doing so much to sustain your children's continuity of learning, especially during the prolonged school closure.

Despite the extreme difficulties and challenges all this has presented us with, the report records substantial achievements in a number of vital areas. These include the very important tool of assessment in which our school is once again proving itself a pioneer. By creating individual pupil profiles our children can see how they are progressing and just how to take this forward. The foundations we have laid through the continuing development of the principles that underpin the new Welsh curriculum will in turn equip children with life enhancing skills and attributes. This journey of self-discovery has been further encouraged and supported throughout the year and the resilience shown to the worst impacts of the virus on the well being of our amazing children is evidence of just how well our school has done in this respect.

I wish Jane, your new chair of the Governing Body, every success in taking our splendid school forward to even greater success in the future. Finally, thank you for the unqualified support you have given me during my stewardship of an appointment which has proved a unique privilege to discharge.

*Richard Verge*  
Chair of Governors (2013 - 2021)

2020 wasn't the year that any of us expected for our children.

I won't ever forget picking up my children on the last day in March, unsure when they would be going back to see their teachers and friends. The week before I had visited the school with other governors. Children had talked with us so confidently about their learning, and told us what they liked about school. At lunchtime the yard was full of play, activities and games.

And none of this happens by chance. The daily wonders that take place at Llanrhidian happen because of careful thought and planning, and they are only possible with exceptional leadership, and with the skill, creativity and dedication of all the staff.

This report gives you the 'headlines' of the last year. It's a way your Governing Body is accountable to you about the schools progress and priorities. But behind these headlines are the experiences of our 158 children, some of which are reflected in the children's voices quoted in this report. These quotes give us some insight into the continuous commitment of staff to inspire our children 'to be the best they can be'.

We don't know exactly what our next year will bring. But we do know that our children's needs to be happy, healthy and safe are at the heart of Llanrhidian school. These needs have been at the centre of how our Head teacher and staff met the challenges of the last year. They will continue to inform every decision the Governing Body takes in supporting Mrs Caswell and her staff.

Our huge appreciation goes to Richard, who as Chair of Governors for the past eight years has given unreservedly of his time, experience and expertise. Our children have benefitted from your commitment, Richard - thank you.

*Jane Houston*  
New Chair of Governors

# Current Governing Body Structure

[Back to Table of Contents](#)

Governor	Role	Term of Office
Donna Caswell	Head Teacher	
Richard Verge	Community Governor	20/1/2021
Fr Tim Ardouin	Community Governor	31/8/2020
Laura Jarvis	Local Authority Governor	24/10/2022
Christopher Abbott	Local Authority Governor (Vice COG)	25/4/2022
Zoe Hughes	Parent Governor	22/7/2022
Karen Berrel	Parent Governor	22/7/2022
Jane Houston	Parent Governor (COG)	19/5/2023
Marion Jenkins	Parent Governor	19/5/2023
Ruth Costigan	Local Authority Governor	18/06/2020
Caroline Morgan	Non Teaching Staff	3/11/2020
Michael Dowsett	Teaching Staff	31/08/2022
<b>Clerk to Governors:</b> <b>Jayne Whitehead</b> <b>The Forge</b> <b>Burrows Lane</b> <b>Llangennith</b> <b>SA3 1JB</b>		





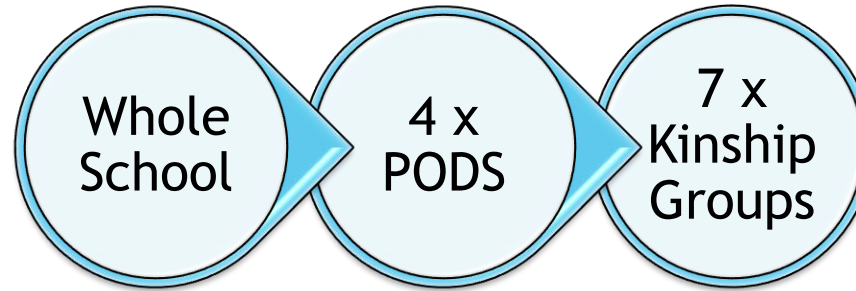
# Current Staffing Structure

[Back to Table of Contents](#)

Head Teacher	Mrs D Caswell
Deputy Head Teacher	Mrs R Jones
Class Teacher	Miss Colwill
Class Teacher	Mr S Goremano
Class Teacher	Mr M Dowsett, B.A. (Hons)
Class Teacher	Mrs M Marchant
Class Teacher	Miss J Walters
Class Teacher	Mrs Joseph
Athrawes Bro	Mrs N Griffiths
Teacher Assistant	Mrs H Williams
Teacher Assistant	Mrs J Froom
Teacher Assistant	Mrs C Morgan
Teacher Assistant	Mrs V Rees
Teacher Assistant	Mrs N Gosney
Teacher Assistant	Mrs K Blackmore
Teacher Assistant	Miss C Weatherley
Teacher Assistant	Mrs S Parry
Teacher Assistant	Mrs L Austin
Clerical Assistant	Mrs J Whitehead
School Cook	Mrs J Webb
Assistant Cook	Mrs A Jeffreys
Supervisors	Mrs C Veck
Supervisors	Ms S Roberts
Caretaker	Mr M Trowbridge



# Pupil Numbers



[Back to Table of Contents](#)

Sept 2020

- Total Children (including nursery) =158
- Total FTE = 150
- N2 = 16
- N1 = 0 (8 pending)
- Capacity = 140 (not including nursery)
- Actual = 142 (101.4% not including nursery)
- Capacity = 180 (including nursery 1 and 2)
- Actual = 150 (83.3% including nursery 1 and 2)





# Children's Rights

[Back to Table of Contents](#)

Children's rights are the human rights of children set out in the United Nation Convention on the Rights of the Child (UNCRC).

Children need their human rights to be happy, healthy and safe. The key principles of the UNCRC are the rights of all children to:

- Equality and non-discrimination;
- Decision making in their best interests;
- Survival and development;
- Participation of the child in decisions that affects their life.

Llanrhidian school is a rights-respecting school. This means that these principles of children's rights are at the centre of decision making in the school. Our school vision is 'to inspire learners to be the best they can be!'

This is based on Article 29 of the UNCRC, the right of all children to develop their talents and skills to the full.



“School is important to me because you get to learn, and make friends, and you get to have your voice” (Year 4 pupil)





# School Performance

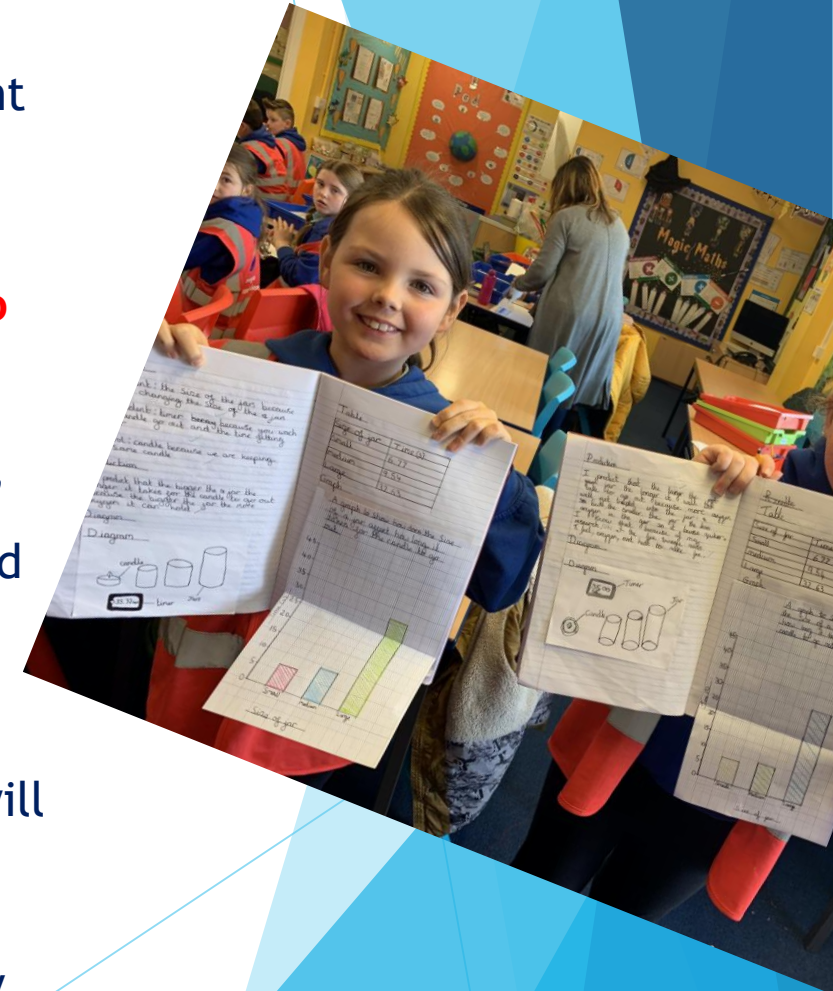
The Welsh Assembly expects every school to report on children's attainment (National Curriculum outcome or level) at the end of Year 2 and Year 6. These are reported to parents in the Summer term reports.

The school usually publishes the results for end of Key Stage Assessments (Year 2 and 6 only). **However, due to Covid19 schools are not expected to publish their data in 2020.**

This year, the school based it's analysis of data on progress and attainment from March 2020. It is important to note that in a small school such as ours, one pupil usually represents 5% or more. Staff continue to analyse data in many ways. Targets for the school are the result of such analysis which feed into the school development plan.

The average expected government level for pupils is Outcome 5, at Year 2, and Level 4 at Year 6.

Under the new curriculum, the central focus of assessment arrangements will be to ensure learners understand how they are performing and what they need to do next. There will be a renewed emphasis on assessment for learning as an essential and integral feature of learning and teaching. As a result, reporting to parents will need to be amended to meet new statutory expectations from 2022.



# Assessment

Llanrhidian has developed its own robust tracking system that enables the school to produce individual pupil profiles covering a range of assessment scores and data on each pupil. These profiles contain information regarding attendance and academic progress. We plot individual pupil progress as well as cohort progress (which we use to review teaching and learning) and set future targets for improvement.



# Attendance

**Schools are not expected to publish their data in 2020 due to Covid 2019.**

**If you have any questions about school attendance data please ask.**





“My favourite thing about school is playing outside” (Reception pupil)

“The best thing... is the wild area and the field” (Year 1 pupil)



# Additional Learning Needs

We continue to provide a high standard of support within the framework of the *Special Educational Needs Code of Practice for Wales 2002*. We consistently operate the *Graduated Response*, as required in this *Code of Practice*.

Our current SEN Register stands at 26 children (16.5%) Educational need is categorised as 8 school action, 13 school action plus and 5 statemented.

# How is the ALN Register Constructed?

When a member of the teaching staff has concern related to the academic progress, emotional development or medical condition of a pupil, they bring their concerns to the attention of the Special Educational Needs Co-ordinator (SENCO). The teacher and SENCO then decide on a course of action and place the pupil on the SEN Register. Pupils with a *Statement of Educational Needs* are also entered on the SEN Register.

Occasionally referrals are made to *Access to Learning*, the City and County's SEN support mechanism asking for support from specialist teachers employed by this service. Pupils referred might already be entered on the SEN Register, or they might be new additions to the register.

Any Looked after Child (LAC), or pupil who is monitored by *Social Services*, is automatically placed on the SEN Register.

The school also receives additional funds to help support individual focus groups of pupils through the Pupil Deprivation Grant (PDG) and Educational Improvement Grant (EIG). The school is working with its cluster primary schools (The North Gower Partnership) to focus upon raising standards in Literacy and Numeracy and Digital Competence.



# Individual Education Plans

## What is an individual Education Plan and Who is issued one?

All pupils listed on the SEN Register, are required by the Code of Practice to receive an individual programme of work, which is constructed with direct reference to their individual needs. In accordance with the requirements of the Code of Practice, the view of parents and pupils are sought and recorded within the review process.

## Who is Responsible for Delivering SEN Support Within Our School?

Mrs Marchant is the ALNCO (Additional Needs Co-Coordinator). Support is also provided by Teaching Assistants, under the guidance of class teachers when appropriate. Mrs Marchant is always happy to discuss your child's progress in relation to special needs, should you wish to do so.

## New ALN Bill

There will be a new statutory ALN Bill from 2021. The school is planning its awareness training in order to prepare staff, pupils and parents for the changes ahead. The new Code of Practice for Additional Learning Needs will be issued in 2021.

## Who is the Governor with Responsibility for Special Needs?

The Code of Practice requires that a member of the governing body is allocated the responsibility of liaising with the ALNCO and Head Teacher, in order to maintain a high standard of provision for children with special needs. In the case of Llanrhidian Primary School this is Mrs Karen Berrell.

# Arrangements for the teaching of Welsh

[Back to Table of Contents](#)

Llanrhidian is an English medium school and communications with parents are provided in English. Welsh is taught as a second language from Nursery age.

The National Curriculum requires children to develop skills in speaking, listening, writing and reading Welsh. Llanrhidian school aims to use the Welsh language so that children see, hear and use it as a natural part of school life. It is given a prominent role in many school activities.

Children also have an opportunity to learn about Welsh culture and heritage, as well as the language of Wales, through activities such as St. David's Day celebrations. Our teaching of Welsh is supported by the LA's team of peripatetic Welsh teachers (Athrawon Bro), who visit the school regularly to work alongside teachers and pupils in developing Welsh Language. All staff undertake relevant training to improve their competency in teaching and learning Welsh.



# Arrangements for the teaching of Sport

[Back to Table of Contents](#)

The school offers two hours of physical education each week as part of the curriculum. Teams in different sports compete in various competitions. There is also an after schools sports club which is free and run by staff. We take part in competitive sporting events against other local schools in activities such as netball, cross-country, football and cricket.

However, Covid19 is currently restricting the school's usual practice.





“The best thing about school is...we have chances to do lots of different sports” (Year 5 pupil)



# Breakfast Club

[Back to Table of Contents](#)

The school offers an Art & Craft Club from 8.00am to 8.25am at a cost of £20 per half term - a contract needs to be in place. Also, there is a free breakfast service to pupils of nursery age and above. This service, which starts at 8.25am offers a range of nutritious foods. Our breakfast/ lunchtime supervisory assistants and canteen staff must be commended for the way they have been part of the team at Llanrhidian by working together. They decorate the canteen so that it is a bright and welcoming environment for our children. Their work is very much appreciated and doesn't go unnoticed.

Covid19 means that families must pre-book their space.



# Pupil Voice & Active Citizenship

[Back to Table of Contents](#)

The school works with charities that promote active citizenship such as Matthew's House, Sponsored Child and Children in Need. Pupils and parents are encouraged to become aware of local, national and global issues faced by children. We promote a sense of community and respect. Llanrhidian Primary School pupils are encouraged to be active and informed citizens who look after their school local community and beyond to develop a positive future for all. Children have a variety of roles through a wide range of pupil voice groups. Children take their responsibility very seriously and show commitment for the good of our school. These activities develop children's sense of wellbeing as they focus on needs of others around them and their relationship with those around them. This year pupils applied for their positions through the advertising of the posts. This encouraged the children to show commitment to the role, giving each a sense of achievement.

Visit our pupil voice pages on our school website here:  
<https://www.llanrhidian.swansea.sch.uk/news-from-the-pupils/>





“I think its important to be listened to because I have important things to say” (Year 1 pupil)

“It’s important to be listened to because we can ask questions” (Year 3 pupil)

“It’s important to be on a pupil voice group because you can share ideas that can make the school a better place” (Year 4 pupil)



# School Council

The school council at Llanrhidian is an important pupil voice group. Pupils are elected by their peers to represent their class on the council. The school council is signed up to the Children's Commissioner for Wales' Super Ambassador scheme, and receive termly 'special missions' from the Commissioner to help promote children's rights in Llanrhidian.

Mrs Morgan is the link teacher for the school council.

“When I got on elected for school council I felt proud, confident, happy, important and brave!” (Year 5 pupil)

“When I got elected for school council I felt happy”  
(Year 1 pupil)

[Back to Table of Contents](#)



# School Finances

## Statement of Actual Expenditure 2019/20 Financial Year

[Back to Table of Contents](#)

	Delegated Expenditure	Non-Delegated Expenditure	Total Net Expenditure
	£	£	£
Teachers Salaries	382,775	0	382,775
Salaries	209,552	12,104	221,656
Other Employee Costs	88	200	288
Premises	22,154	0	22,154
Transport	633	42,366	42,999
Supplies & Services	94,966	0	94,966
Recharges	46,094	0	46,094
Gross Expenditure	756,262	54,670	810,932
Grant Income	-101,260	0	-101,260
Other Income	-69,760	-157	-69,917
Gross Income	-171,020	-157	-171,177
Net Expenditure	585,242	54,513	639,755
RESERVES:		£	
FINAL FORMULA ALLOCATION:		550,642	
TOTAL NET EXPENDITURE:		585,242	
TRANSFER TO / (FROM) RESERVES:		-34,600	
OPENING BALANCE ON RESERVES 01/04/19		125,174	
CLOSING BALANCE ON RESERVES: 31/03/20		90,574	

# Community Links

[Back to Table of Contents](#)

It is a regular focus of our School Development Plan that we maintain and extend our links with the community. The school maintains close links with the local community through school performances and events. Close links are also maintained with Gowerton Comprehensive School through visits of pupils (Year 4, 5 & 6), Headteacher meetings, curriculum leader meetings and sporting activities.

Open the Book Assembly group are regular visitors to the school, telling traditional bible stories to the school. The police liaison team are well known visitors and carry out various personal and social workshops with the pupils. P.C. Andrew Brown comes in regularly to support the school with road safety.

However, Covid19 is currently restricting the school's usual practice and families must pre - book.





“My favourite thing about Llanrhidian school is the teachers because they are loving and caring” (Year 5 pupil)



# School Prospectus

[Back to Table of Contents](#)

The school prospectus is reviewed and updated regularly. This is posted on the school website. The prospectus contains information about the school's class structures and outlines the aims and vision of the school. For a full colour copy of the prospectus, please ask Mrs. Whitehead in the school office or see the school's [website](#).



# Session Times

[Back to Table of Contents](#)

	a.m. times	p.m. times
Pod Pili Pala	8.55 a.m. - 11.40 am	12.55 p.m. - 3.10 p.m.
Pod Pengwin	8.55 a.m. - 12 pm	12.55 p.m. - 3.20 p.m.
Pod Pysgodyn	8.55 a.m. - 12 pm	12.55 p.m. - 3.25 p.m.
Pod PryCop	8.55 a.m. - 12 p.m.	12.55 p.m. - 3.25 p.m.





# Secondary School

[Back to Table of Contents](#)

Our links with our partner secondary school, Gowerton School have continued to be strong over the course of the year. The Year 6 children have attended orchestral days at the school. Gowerton organise a 'transition period' in which our Year 6 children will spend several days at the school familiarising themselves with the layout of the site, the teachers, and procedures and routines in regards to lunchtimes etc.





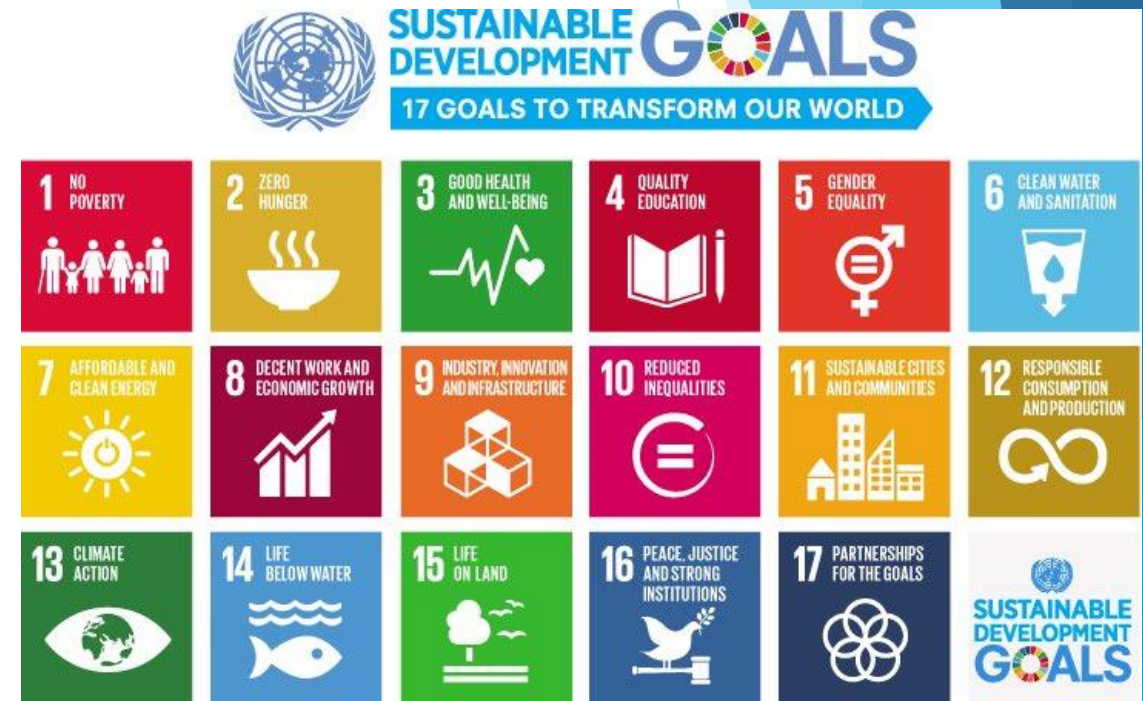
“It’s important to be on a pupil voice group because... it gives you an opportunity to give ideas for the younger ones so when you go to comp they have an amazing time in primary” (Year 6 pupil)



# Moral & Social Development

Our innovative curriculum helps guide and support the moral and social development of our pupils. Our school ethos and school policies plan and support this area. This is underpinned by the United Nations of the Rights of the Child and the Sustainable Development Goals.

[Back to Table of Contents](#)



“It’s important to be  
listened to because you  
have a voice and you can  
use it to benefit everyone”  
(Year 6 pupil)



# The New Curriculum 2022

[Back to Table of Contents](#)

A new curriculum is being developed for schools in Wales. Llanrhidian has been part of developing this new curriculum as a 'pioneer school'.

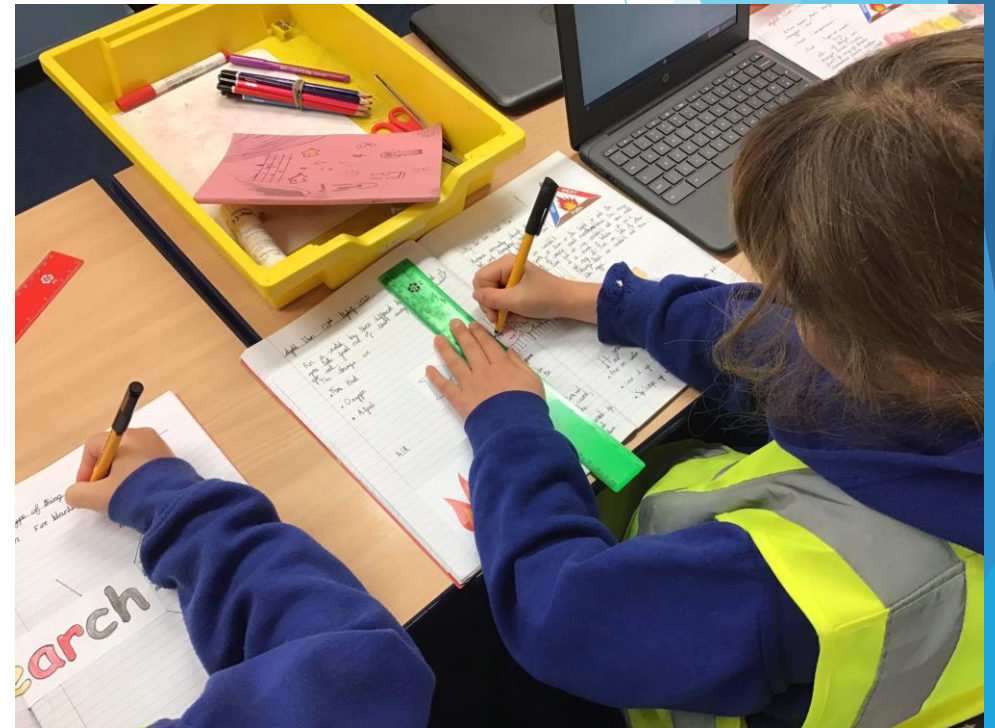
You can see the how we are developing the new curriculum [here](#).

The new curriculum has more emphasis on equipping young people for life. It will build children's ability to learn new skills and apply their subject knowledge more positively and creatively. As the world changes, they will be more able to adapt.

They will also get a deep understanding of how to thrive in an increasingly digital world. A digital competence framework is now introducing digital skills across the curriculum, preparing them for the opportunities and risks that an online world presents.

Meanwhile teachers will have more freedom to teach in ways they feel will have the best outcomes for their learners.

The central focus of assessment arrangements will be to ensure learners understand how they are performing and what they need to do next. There will be a renewed emphasis on assessment for learning as an essential and integral feature of learning and teaching.





# Four Purposes of Education

As a pioneer school, we are developing a curriculum that puts the following four purposes right at the heart of what we do.

We want every learner to leave Llanrhidian as:

ambitious, capable learners, ready to learn throughout their lives

enterprising, creative contributors, ready to play a full part in life and work

ethical, informed citizens of Wales and the world

healthy, confident individuals, ready to lead fulfilling lives as valued members of society.

[Back to Table of Contents](#)



“School is important to me  
because it helps my brain  
to grow” (Year 2 pupil)



# SDP Targets 2020-2021

[Back to Table of Contents](#)

## 1. Learning

- Raise standards in basic skills to support progress in Science and Technology and Welsh

## 2. Wellbeing & Attitudes to Learning

- Support high levels of wellbeing in staff and pupils

## 3. Teaching & Learning Experiences

- Refine consistency of pedagogical, andragogical and heutagogical skills
- Embed consistency in Welsh provision

## 4. Care, Support and Guidance

- Refine tracking of wellbeing and attainment across all AoLEs

## 5. Leadership & Management

- Develop and refine consistency of blended learning across the school

# Progress on our School Development Plan

[Back to Table of Contents](#)

Parents are made aware of the focus via newsletters, parent meetings and our school website. The SDP is available at the school office should any parent wish to read it in more detail.

Our SDP runs from September to July each academic year. Our targets are devised using a number of sources. These include analysis of end of academic year data from national and standardised tests and teacher assessments; comparisons of Llanrhidian Primary School performance against similar schools in the LA and Wales; local and national priorities; Estyn recommendations; staff, parent, pupil and governor questionnaires and monitoring and audits undertaken by the Head teacher, Senior Management Team, AoLE leads and external advisors.

Our PESTs (Pupil Evaluation School Team) evaluate our targets from a pupil perspective each year. To access our past and present development plans please click [here](#).





# Progress on our targets from last ESTYN Inspection (2017)

[Back to Table of Contents](#)

Date of Last Inspection: July 2017	Current Performance: 1		Capacity to Improve: A	Subsequent Monitoring: None
Recommendation	Very good progress	Strong progress	Satisfactory progress	Limited progress
	Tackles the recommendation in every way	Tackles the recommendation on the whole	Tackles the recommendation in many ways	Does not satisfy the recommendation
Definition	Does not require any further attention to any aspect. Very good effect on the quality of provision.	Requires attention only to minor aspects. Positive effect on standards and / or the quality of provision.	Continues to require substantial attention to some important aspects. Limited effect on standards and / or quality of provision.	Each aspect or many important aspects continue(s) to require attention. No effect on standards and / or quality of provision.
R1. Share the best practice in teaching and learning across the school to improve standards further	<ul style="list-style-type: none"> <li>Developed a new monitoring process to identify and share excellent practice</li> <li>Shared identified excellence in Year 5/6 through a training session for our teachers and those from other schools</li> <li>Aligned PM with teaching continua in terms of "excellent" characteristics</li> <li>Planned peer obs to align with teaching continua focus</li> <li>Developed a system of charting CPD via Hwb</li> </ul>			
R2. Expand the opportunities to improve pupils' oracy skills in Welsh	<ul style="list-style-type: none"> <li>Shwmae Day Oct 13<sup>th</sup></li> <li>Further developed Dreigiau Cymraeg</li> <li>Continued with Gwasanaeth Cymraeg</li> <li>Pupil led certificates</li> <li>Siop Cierios used daily</li> </ul>			

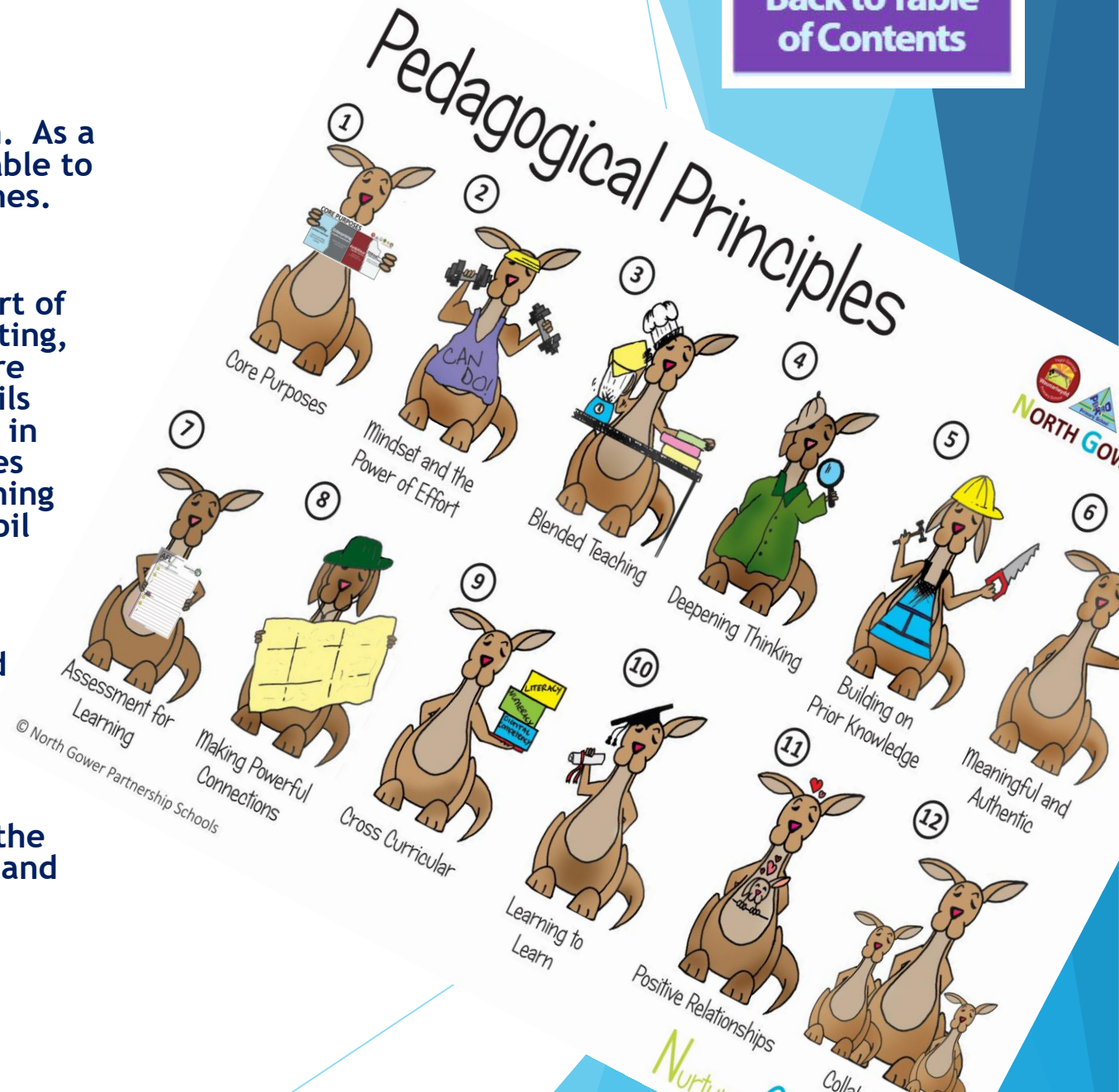
# Our Curriculum

We are in a time of significant change in primary education. As a Pioneer School, we are in the privileged position of being able to develop teaching and learning through innovative approaches.

Planning and assessment of a skills continuum is at the heart of this change, in addition to raising standards in reading, writing, numeracy and digital competency. Annual National Tests are undertaken in Reading and Numeracy each May for all pupils from Y2 to Y6. Parents are informed of their child's scores in these tests at the end of the Summer Term. The school uses this, and other data, to track pupils' progress, inform teaching and learning and also to identify and support individual pupil needs.

Our Curriculum for learning policy is updated and reviewed regularly, and our purpose based curriculum planning is continually reviewed.

Governors and members of staff have worked closely with the Head teacher regarding school self-evaluation, assessment and raising standards.



[Back to Table of Contents](#)

“My favourite thing about Llanrhidian school is learning about the Greek gods” (Year 3 pupil)

“My favourite thing... is choice and challenge (Year 3 pupil)

My favourite thing... is playing in the shop in the role play area”  
(Reception pupil)

The best thing is maths and science because its fun and you can do experiments (Year 6 pupil)





# School Policies

We regularly review and update our school policies. Reviews are undertaken on a rolling programme, led by relevant leaders.

Review of policies ensures the inclusion of new developments, resources and methodologies particularly with the Government drive on safeguarding and raising standards in literacy and numeracy. Copies of school policies can be obtained from the school office and many are available on our school website. You can access this list [here](#).

[Back to Table of Contents](#)





# Health & Safety & Safeguarding

Safeguarding is of paramount importance to the staff and governors of Llanrhidian. All staff and governors are required to take child protection training every three years. The school provided training in Autumn 2019. Mrs D Caswell is the designated Child Protection Officer for the school. Mrs J Houston is the designated Child Protection Governor for the School.

Whilst encouraging independence and decision making, the school strives to provide the pupils with a safe environment in which to nurture their skills. Changes to the school over the last two years in terms of health and safety have included:-

- New hall lights
- New Canteen Windows
- New Pod
- Covid19 Risk assessment and operational plans
- Removed Farm for one way system
- Converted Hall and Canteen into learning areas
- Installed Hand Sanitiser Stations
- New electronic sign in for TTP
- Doorbell for school access

[Back to Table of Contents](#)



“It’s important to be  
listened to because when I  
am sad sometimes the  
teachers can help me”  
(Year 2 pupil)



# Toilet Facilities

[Back to Table of Contents](#)

Llanrhidian Primary provides good quality toilet facilities throughout the school. The school recognises that well-maintained toilet facilities where learners feel comfortable and safe and have open access to throughout the school day, are essential for health, well-being, and learning.

Toilets and washroom facilities are open and available to learners throughout the school day. They are suitable for the range of anticipated users, including learners with disabilities and special needs, with adequate lighting, fixtures and fittings. There is a “Big Girls’ Toilet” for the use of all year 5 and 6 girls. This is equipped with appropriate sanitary protection and sanitary disposal equipment.





# Accessibility Plan & Disability Equality Plan

[Back to Table of Contents](#)

The school's Strategic Equality Plan - SEP - is reviewed every three years and was reviewed in Summer 2019. It identifies access needs in order that the school may continue to be inclusive to all. This has been used to inform the LA of school priorities in this area. All visitors are asked to inform the office if they have specific needs and we endeavour to meet requests.

A copy of the SEP is available from our school office. This is also be available via the school website.





“School is important to me because I meet new teachers, I learn, I get to make new friends. And I get listened to. Most important of all, it is really fun!” (Year 4 pupil)

