



How to connect an Electric Circuit

How to Connect an Electric Circuit

Step 1: Get your equipment

You will need a battery, two wires, a bulb, and switch.



Step 2: Connect the first wire

Connect one wire from the battery to the bulb.



Step 3: Add the switch

Connect another wire from the bulb to switch.



Step 4: Complete the circuit

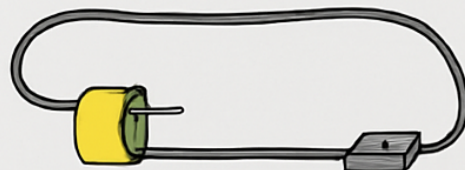
Connect a wire from the switch back to battery.



Step 5: Turn it on!

Press the switch.

The bulb should light up!



Questions

1. What four things do you need to build a circuit?

👉 You need...

2. Where does the first wire go?

👉 The first wire goes from...

3. What does the switch do?

👉 The switch...

4. What happens when you press the switch?

👉 When you press the switch...

5. Why is it important to connect all the parts?

👉 It is important because...