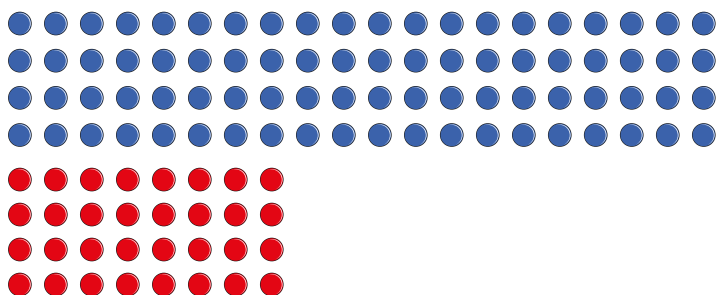


- 1 The children of Class 4 are multiplying 28×4 mentally. They are trying two different methods.

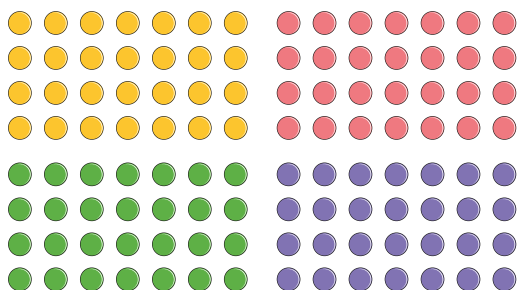
a) Complete their calculations.

Method 1



$$20 \times 4 + 8 \times 4 = \boxed{} + \boxed{} = \boxed{}$$

Method 2



$$4 \times \boxed{} = \boxed{}$$

b) Which method do you find easier?

Talk about it with a partner.

c) What other methods could you use to work out 28×4 ?

- 2 Ron, Amir and Annie have worked out 35×6 in different ways.



Ron

I multiplied
30 by 6 and then added
5 more lots of 6



Annie

I multiplied
5 by 6, then multiplied
that answer by 7

I multiplied
35 by 2, then multiplied
that answer by 3



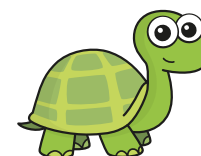
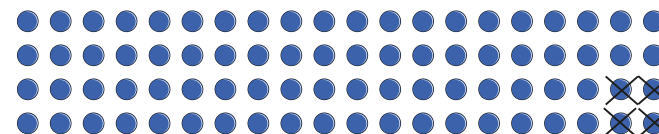
Amir

a) Work out the answer using each method to show that they are all correct.

b) Who has used the most efficient method?

Talk about it with a partner.

- 3 Tiny is working out 21×4



$$\begin{aligned} 20 \times 4 &= 80 \\ 80 - 4 &= 76 \\ 21 \times 4 &= 76 \end{aligned}$$

a) What mistake has Tiny made?

b) What is the correct answer?

- 2 Ron, Amir and Annie have worked out 35×6 in different ways.



Ron

I multiplied
30 by 6 and then added
5 more lots of 6



Annie

I multiplied
5 by 6, then multiplied
that answer by 7



Amir

I multiplied
35 by 2, then multiplied
that answer by 3

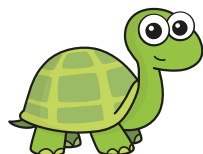
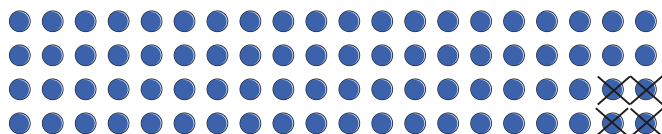
- a) Work out the answer using each method to show that they are all correct.

- b) Who has used the most efficient method?

Talk about it with a partner.



- 3 Tiny is working out 21×4



$$\begin{aligned} 20 \times 4 &= 80 \\ 80 - 4 &= 76 \\ 21 \times 4 &= 76 \end{aligned}$$

- a) What mistake has Tiny made?

- b) What is the correct answer?

- 4 Jack has worked out 36×9

- a) Use Jack's method to work out 28×9

- b) Adapt Jack's method to work out 36×99

$$\begin{aligned} 36 \times 9 \\ 36 \times (10 - 1) \\ 360 - 36 = 324 \end{aligned}$$



- 5 Esther has found a quick way to multiply 84 by 5

$$\begin{aligned} 84 \times 5 \\ 84 \times 10 = 840 \\ (\text{then divide by } 2) \text{ which is } 420 \end{aligned}$$



Use Esther's method to work out the calculations.

- a) 43×5 b) 62×5 c) 74×5 d) 96×5

- 6 Tommy and Dora are both working out 25×8

- a)

$$25 \times 8 = 25 \times 10 - 25 \times 2$$



Use Tommy's method to work out the answer.

- b)



$$25 \times 8 = 50 \times 8 \div 2$$

Use Dora's method to work out the answer.

- c) Whose method do you prefer?

Why?

