

Multiply a 3-digit number by a 1-digit number



1 Filip uses a place value chart to help him multiply a 3-digit number by a 1-digit number.

Hundreds	Tens	Ones
100	10 10	1 1 1 1
100	10 10	1 1 1 1
100	10 10	1 1 1 1

a) What multiplication is Filip working out?

×

b) What is the answer to Filip’s multiplication?

2 Use place value counters to complete the multiplications.

a) $3 \times 213 =$

d) $6 \times 106 =$

b) $4 \times 216 =$

e) $4 \times 209 =$

c) $5 \times 106 =$

f) $317 \times 3 =$



3 Complete the multiplication.
Use the place value chart to help you.

H	T	O
100 100	10	1 1 1 1 1
100 100	10	1 1 1 1 1
100 100	10	1 1 1 1 1

		H	T	O	
		2	1	5	
	×			3	

4 Complete the multiplications.

a)

		H	T	O	
		2	1	7	
	×			4	

c)

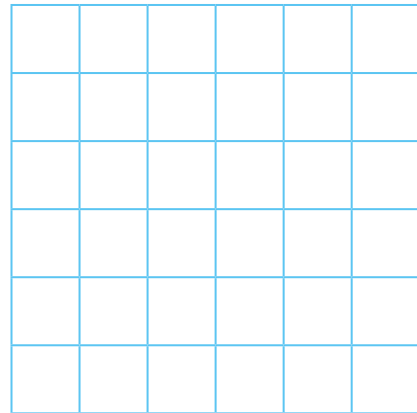
		H	T	O	
		1	0	8	
	×			6	

b)

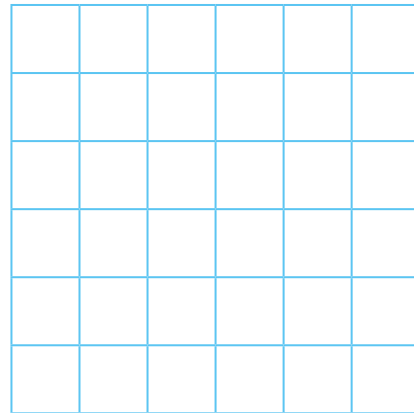
		H	T	O	
		4	3	9	
	×			2	

d) 163×5

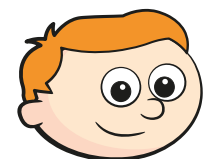
e) 3×240



f) 7×131



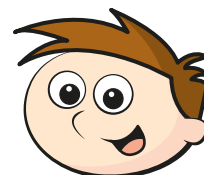
- 5 Ron and Teddy are working out 5×245



Ron

I know the answer will be greater than 1,000 because I know 5×200 is 1,000

I know the answer should end in 5 because I know 5×5 is 25



Teddy

- a) Who is correct? Circle your answer.

Ron

Teddy

both

neither

- b) Use a written method to work out 5×245

6

A lorry driver travels 156 km per day.

How many kilometres will the lorry driver have travelled after 3 days?

7

There are 7 year groups in a school.

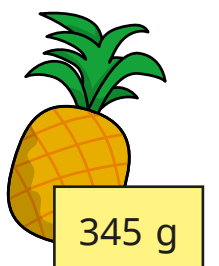
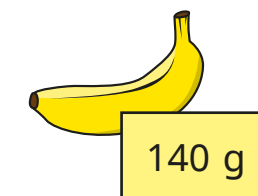
There are 112 children in each year group.

How many children are there in the whole school?

8

The mass of a banana is 140 g.

The mass of a pineapple is 345 g.



Bag A contains 8 bananas and bag B contains 3 pineapples.

Which bag is heavier and by how much?

Bag _____ is g heavier than bag _____