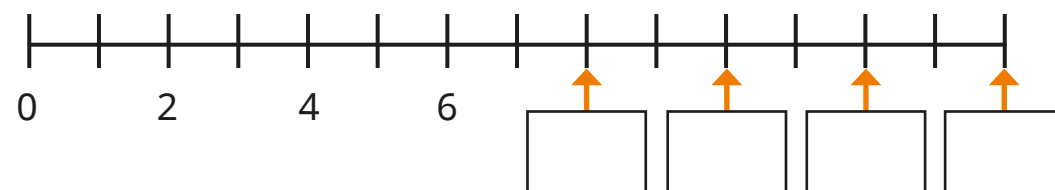


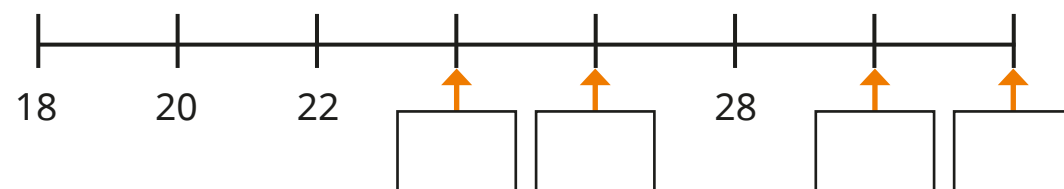
Multiples of 2

1 Complete the number lines.

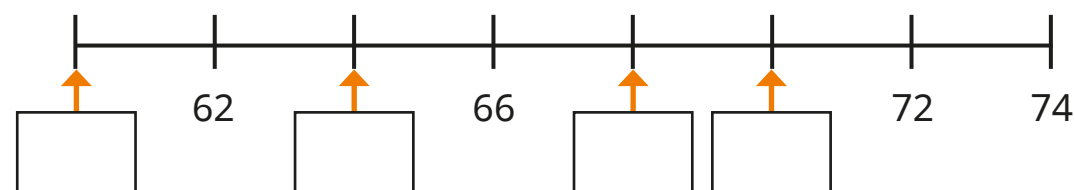
a)



b)

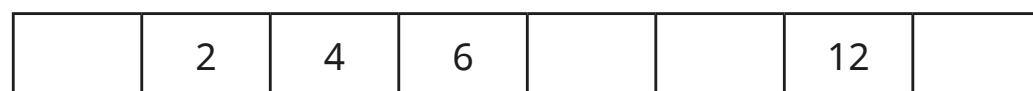


c)

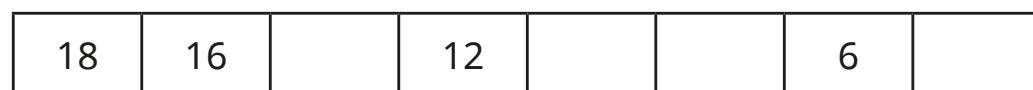


2 Complete the number tracks.

a)



b)



3 Shade the multiples of 2 in the hundred square.

1	2	3	4	5	6	7	8	9	10
11	12	13	14	15	16	17	18	19	20
21	22	23	24	25	26	27	28	29	30
31	32	33	34	35	36	37	38	39	40
41	42	43	44	45	46	47	48	49	50
51	52	53	54	55	56	57	58	59	60
61	62	63	64	65	66	67	68	69	70
71	72	73	74	75	76	77	78	79	80
81	82	83	84	85	86	87	88	89	90
91	92	93	94	95	96	97	98	99	100

What do you notice?

4 Here are some numbers.

38	23	102	249	636
47	81	138	354	843

a) Which of the numbers are even?

b) Which of the numbers are odd?

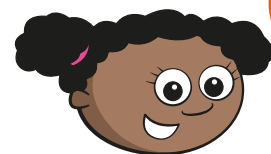
How do you know?

- 5 a) Write three multiples of 2 between 80 and 100

- b) Write three multiples of 2 between 230 and 250

- c) Write three numbers that are not multiples of 2 between 140 and 160

- 6 Whitney is finding multiples of 2



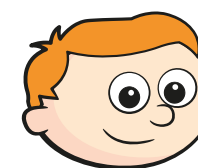
I know that
 $2 \times 5 = 10$ and $2 \times 10 = 20$
I can use these facts to find
other multiples of 2

- a) Use Whitney's facts to find 2×6

- b) Use Whitney's facts to find 2×15

- c) Use Whitney's facts to find 2×20

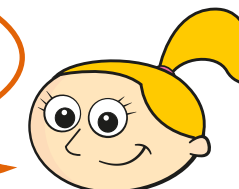
7



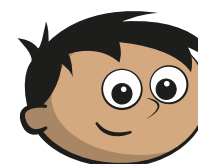
Ron

When you add two odd
numbers together, the answer
is always a multiple of 2

When you add three odd
numbers together, the answer is
always a multiple of 2



Eva



Amir

When you subtract an
odd number from an odd
number, the answer is not a
multiple of 2

Who do you agree with? _____

Explain your reasons to a partner.

8

Dani is thinking of three multiples of 2 between 0 and 20

The sum of Dani's numbers is 38

What could Dani's numbers be?

Find at least three different combinations.

$$\square + \square + \square = 38$$

$$\square + \square + \square = 38$$

$$\square + \square + \square = 38$$

Compare answers with a partner.