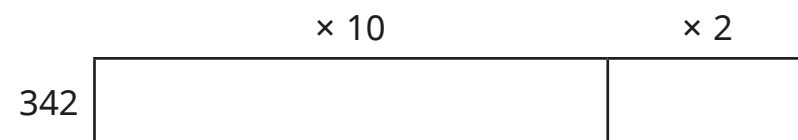


Solve problems with multiplication

1 Use the bar models to work out the multiplications.

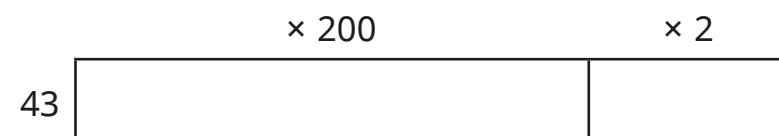
a) $342 \times 12 =$



b) $21 \times 514 =$



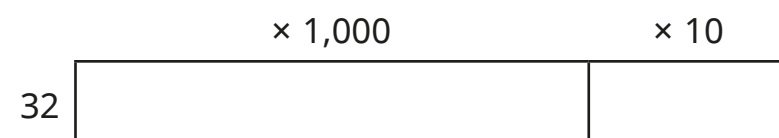
c) $202 \times 43 =$



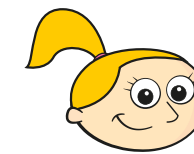
d) A machine can pack 1,010 boxes each day.

There are 32 machines in a factory.

How many boxes can be packed in one day?



2 Eva is working out 32×19



I can multiply
32 by 20 and then
subtract 32

Use Eva's method to solve the problems.

a) 19 children are going on a school trip on the train.

A train ticket costs £24

What is the total cost of the tickets?

£

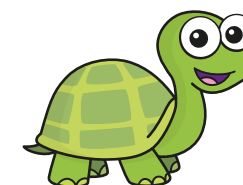
b) A house is 4 m tall.

A skyscraper is 39 times the height of the house.

What is the height of the skyscraper?

m

3



To multiply
by 5, I can multiply
by 10 and then halve
my answer.

Use Tiny's method to work out the multiplications.

a) $64 \times 5 =$

c) $126 \times 5 =$

b) $5 \times 286 =$

d) $5 \times 2,052 =$

4 Fill in the missing numbers.

a) $16 \times 6 = 8 \times \square$ so $16 \times 6 = \square$

b) $6 \times 24 = 12 \times \square$ so $6 \times 24 = \square$

c) $36 \times 4 = 12 \times \square$ so $36 \times 4 = \square$

5 Fill in the missing numbers.

Use the factors to help work out the multiplications.

a) $8 \times 15 = \square$
 $8 \times \square \times \square$

c) $28 \times 3 = \square$
 $\square \times \square \times 3$

b) $6 \times 24 = \square$
 $6 \times \square \times 12$

d) $32 \times 25 = \square$
 $\square \times \square \times 25$

6 There are 44 seats on a coach.

How many seats are there on 6 coaches?

Use factors to help you solve the problem.

7 How many different ways can you calculate 32×21 ?

Compare methods with a partner.

8 A laptop costs £199.99

What is the cost of 3 laptops?

£

9

$\square \times \square = 684$

Complete the multiplication in as many different ways as you can.

Compare answers with a partner.