

LLANRHIDIAN PRIMARY SCHOOL

School Prospectus

July 2024-2025



"Grow. Learn. Succeed. Together!"
Inspiring our children to be the best they can be!

We hope you find this prospectus useful.

This prospectus has a number of important links to our school website where you will find up to date information.

Please use the “[Contents Page](#)” button to return to the contents page.

If you have any questions or queries about any aspects of Llanrhidian Primary School, please contact the school. A hard copy is available from the school office.



HOW TO NAVIGATE THIS PROSPECTUS

[Contents
Page](#)

CONTENTS



Dear Parents and Carers,

Welcome to Llanrhidian Primary School. This is a school where we believe every member of it's community has the right to be the best they can be!

We deliver an innovative and purposeful curriculum for every pupil, and are committed to ensuring the wellbeing of pupils and staff is embedded and promoted at every opportunity.

If your child attends Llanrhidian Primary School, they will be listened to, encouraged to participate and be part of a caring and supportive family.

Our family extends to our partner schools which all feed into Gowerton Comprehensive. Together we nurture and prepare our pupils for a lifetime of learning and success.

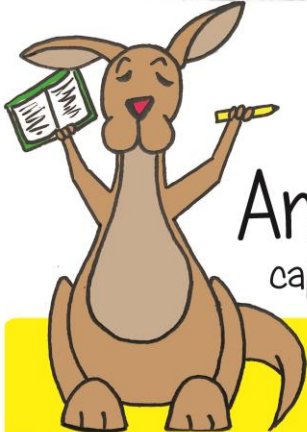
I hope you find this prospectus useful, and if you have any questions, please do not hesitate to contact us.

Kindest Regards

Mrs D Caswell

WELCOME

Website
Link



NORTH GOWER PARTNERSHIP

Ambitious

capable learners who:

- ✓ Set themselves high standards and seek and enjoy challenge
- ✓ Are building up a body of knowledge and have the skills to connect and apply that knowledge in different contexts
- ✓ Are questioning and enjoy solving problems
- ✓ Can communicate effectively in different forms and settings, using both Welsh and English
- ✓ Can explain the ideas and concepts they are learning about
- ✓ Can use number effectively in different contexts
- ✓ Understand how to interpret data and apply mathematical concepts
- ✓ Use digital technologies creatively to communicate, find and analyse information
- ✓ Undertake research and evaluate critically what they find and are ready to learn throughout their lives.

© North Gower Partnership Schools

Contents
Page

**Llanrhidian Primary School,
Llanrhidian,
Gower,
Swansea.
SA3 1EH**

Tel: 01792 390181

e-mail: Llanrhidian.Primaryschool@swansea-edunet.gov.uk

School website: www.llanrhidian.swansea.sch.co.uk

Instagram: [Llanrhidian_primary_school](https://www.instagram.com/llanrhidian_primary_school)

Head teacher: Donna Caswell

Deputy Head teacher: Sarah Archard

ALNCO: Lisa Marchant

Chair of Governors: Jane Houston

CONTACT US



**Contents
Page**



Our Mission Statement

“Learn, Grow, Succeed Together!”

Our Vision Statement

“Inspiring our children to be the best they can be!”

MISSION & VISION

**Website
Link**

**Contents
Page**

Teaching and Learning

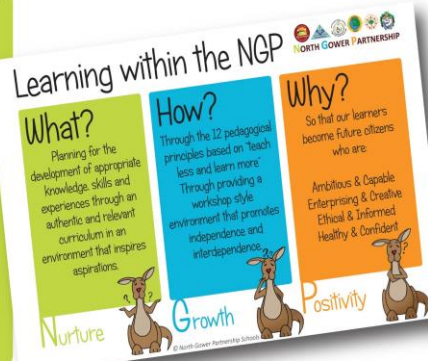


In 'Education in Wales: Our National Curriculum', Kirsty Williams, Wales' Minister for Education emphasises:

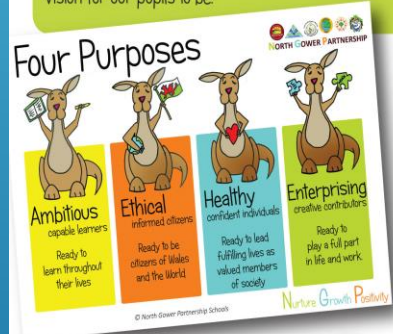
'A renewed commitment to improving both the skills and knowledge our young people, as we raise standards in our transformational curriculum. Education has never been more important. Education reform is our national mission'

"Teaching Less, Learning More" - Empowering staff to be creative within the North Gower Partnership.

In developing a new, exciting and challenging Curriculum, we have a vision for our pupils to be:



We have developed within our North Gower Partnership (Gowerton School and our partner primary schools, Gowerton, Llanrhidian, Penclawdd, Penyfro and Waunarlwydd) a strategy for understanding the new curriculum and using a character, Kanga, to help both staff, pupils and parents.



In addition to a focus on literacy, numeracy and digital competence which underpins all areas of the curriculum in terms of skills

Within the 'Successful Futures' report by Professor Graham Donaldson there is a focus on 12 pedagogical principles that underpin good teaching and learning. We have embedded these within our partnership and they are visible reminders in classrooms. They help us use and understand these principles in the language of our schools.



- ▶ create a happy welcoming school environment that respects the UNCRC's Rights of the Child.
- ▶ Deliver a "four purpose" driven curriculum
- ▶ develop each individual to their potential through offering a wide range of high quality skills and knowledge based experiences.
- ▶ promote equality of opportunity and respect for everyone, irrespective of belief, race and gender.
- ▶ encourage a love of learning and high levels of confidence through a growth mindset approach
- ▶ develop effective thinking, independent learning and the ability to solve problems creatively.
- ▶ use every opportunity to develop the skills of Numeracy, Literacy and Digital Competency enabling each child to experience achievement at all levels.
- ▶ enable pupils to be given progressive responsibility for organising their learning and management of time.
- ▶ enhance self-worth and the ability to value each person's own worth through a caring, secure environment. This will develop sensibility to others, self-discipline, high self-esteem and acceptable behaviour.
- ▶ develop imagination and creativity by offering wide range of authentic experiences.
- ▶ develop the natural curiosity that children exhibit about themselves and their world, and use their curiosity to foster positive attitudes to learning.
- ▶ develop an appreciation of the heritage and history of Wales as well as learning the Welsh language.

SCHOOL AIMS

Website
Link





Contents
Page

The **four purposes** are the shared vision and aspiration for every child and young person. In fulfilling these, we set high expectations for all, promote individual and national well-being, tackle ignorance and misinformation, and encourage critical and civic engagement.

THE FOUR PURPOSES



Contents
Page

Pod/Area of School	Pupils	Staff
Pod Pili Pala 	Nursery	Mrs Marchant Miss Harris
Pod Penguin 	Reception Year 1	Mrs Marchant Miss Walters Mrs Blackmore Mrs Rees
Pod Pysgodyn 	Year 2 Year 3	Mr Goremano Miss Colwill Mrs Parry
Pod Pry Cop 	Year 4 Year 5 Year 6	Mrs Archard Mr Dowsett Mr Lisk
Office		Mrs Caswell (Head Teacher) Mrs Gosney (Admin) Mr Morgan (Caretaker)

STAFF

Website
Link

Contents
Page

A Note from the Chair Of Governors Mrs J Houston:

Governors work together to make sure that everyone at Llanrhidian can experience our school mission to "Learn, Grow, Succeed Together!"

Children's Rights are important in Llanrhidian school. The United Nations Convention on the Rights of the Child (UNCRC) informs how we work and the decisions we make. Our school vision is to 'inspire all learners to be the best they can be!'

To succeed in our vision and mission governors need to make sure our school is always improving and developing.

As governors we have three important jobs:

- ▶ We set a direction and plan for what the school should achieve. This is set out in the School Development Plan.
- ▶ We check that the Head Teacher is making sure all children are progressing in their learning.
- ▶ We check that the school can show how money is used and that it is used wisely.

We need to make sure our Governing Body develops too. We do this by setting goals for our Governing Body and including these in our School Development Plan.

An annual governor report to parents and cares is published on the school website. ([Link to annual reports](#))

For More information about our school governors, please contact the Clerk to Governors (Mrs N Gosney) via Llanrhidian.primaryschool@Swansea-edunet.gov.uk or visit the school website ([Link to governor page](#))

GOVERNORS

Website
Link

Contents
Page

We believe that to get the best out of all our learners (and that includes staff) we have to offer rich and exciting experiences. We are committed to developing a curriculum which engages, enthuses and inspires our pupils and staff. We encourage teachers to have the freedom to teach in ways they feel will have the best outcomes for their learners.

We have a strong emphasis on the acquisition and application of skills and knowledge through experiential and active learning. We study a whole school topic each term. All children contribute to their curriculum, ensuring that they have ownership over their learning, through class planning at the beginning of each term.

Every whole school topic is launched either through mystery trips, school based activities and use of visitors to ensure effective learner engagement from the first day of each term.

For more information please view our Curriculum Policies. ([Link to Curriculum Policies](#))

OUR CURRICULUM

Website
Link

Learning within the NGP



What?

Planning for the development of appropriate knowledge, skills and experiences through an authentic and relevant curriculum in an environment that inspires aspirations.

Nurture



How?

Through the 12 pedagogical principles based on "teach less and learn more"
Through providing a workshop style environment that promotes independence and interdependence.

Growth



Why?

So that our learners become future citizens who are:

Ambitious & Capable
Enterprising & Creative
Ethical & Informed
Healthy & Confident

Positivity



Contents
Page

Relationships and Sexuality Education (RSE) is mandatory from 2022 and is considered as part of the Health and Well-Being Area of learning, as well as being a cross cutting theme across all learning.

This vital part of every pupil's learning is underpinned by the UNCRC's Rights of the Child. These include:

Article 2 "Your right to equality and non-discrimination."

Article 6 "Your right to grow up and be healthy."

Article 13 "Your right to have information."

Article 34 "Your right to be protected from abuse."



North Gower Partnership

Ethical

informed citizens who:

- ✓ Find, evaluate and use evidence in forming views
- ✓ Engage with contemporary issues based upon their knowledge and values
- ✓ Understand and exercise their human and democratic responsibilities and rights
- ✓ Understand and consider the impact of their actions when making choices and acting
- ✓ Are knowledgeable about their culture, community, society and the world, now and in the past
- ✓ Respect the needs and rights of others, as a member of a diverse society
- ✓ Show their commitment to the sustainability of the planet and are ready to be citizens of Wales and the world

© North Gower Partnership Schools

RELATIONSHIPS & SEXUAL EDUCATION

[Website Link](#)

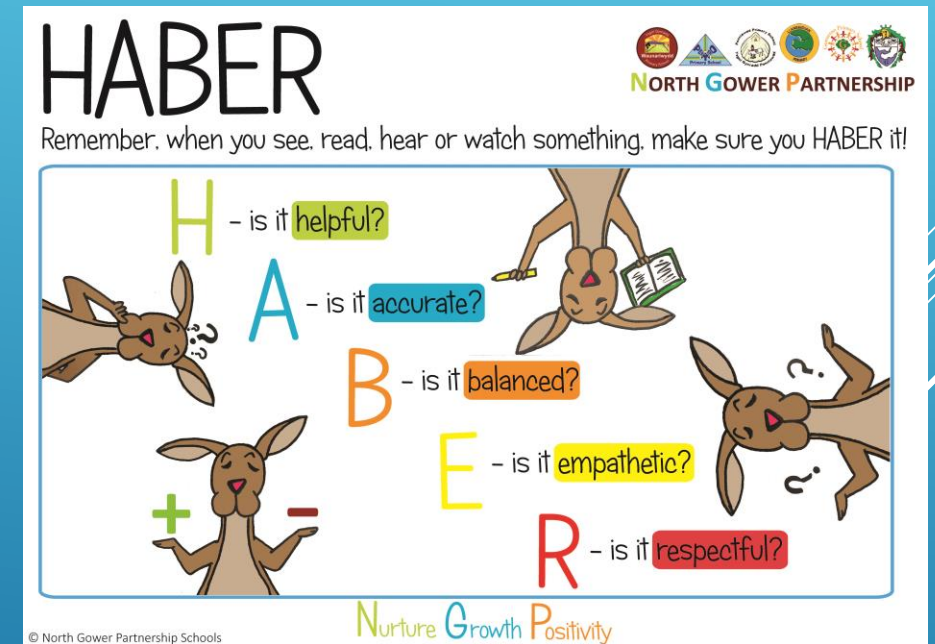
[Contents Page](#)

Links to Children's Rights

Religion, values and ethics (RVE) education enables children to experience and understand their rights. These include their human rights to freedom of religion thought and conscience (Articles 14 of the UNCRC), their rights to cultural participation (Articles 15 and 31 of the UNCRC) and their right to their own identity (Articles 2, 7 and 30 of the UNCRC).

In Llanrhidian we teach RVE through:-

- ▶ Explicit teaching of world beliefs
- ▶ Exploring ideas through “Big Questions
- ▶ Encouraging all pupils to see links with real world events
- ▶ Reflection on our world and how we can make a difference
- ▶ Opportunities to study local and global contexts (Sustainable Development Goals)
- ▶ Developing critical thinking skills using our HABER model
- ▶ Age appropriate daily worship time and reflection
- ▶ Stories, school events and visitors



RELIGION, VALUES AND ETHICS

Website
Link

Contents
Page

Links to Children's Rights

Learning in Health and Well-being supports children to understand their rights and the rights of others (Articles 2 and 42 of UNCRC). It also supports children to experience their rights to be safe and protected from harm (Articles 19, 33, 34, 36) and also promotes the right of children to relax and play (Article 31) and to have healthy food and clean water (Article 24)

In Llanrhidian we teach and develop physical health through:-

- ▶ Explicit teaching the science of health (mental and physical)
- ▶ Daily puff
- ▶ Sports Club
- ▶ “Skills and Stamina” lessons
- ▶ “Relax and Refuel” time
- ▶ Healthy cooking activities
- ▶ Healthy Schools Award



PHYSICAL EDUCATION

[Website Link](#)

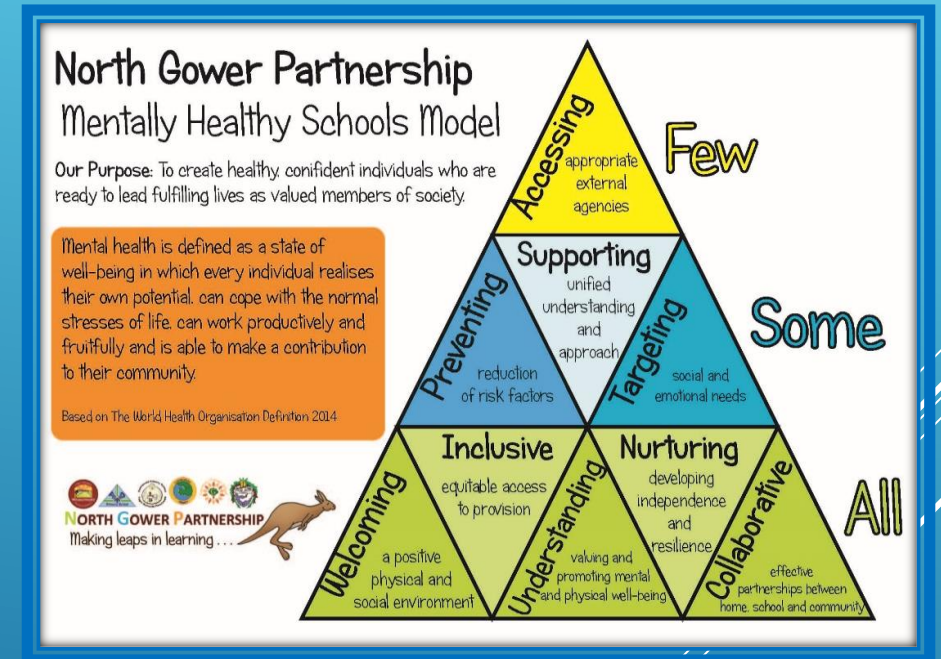
[Contents Page](#)

Links to Children's Rights

Learning in Health and Well-being supports children to understand their rights and the rights of others (Articles 2 and 42 of UNCRC). It also supports children to experience their rights to be safe and protected from harm (Articles 19, 33, 34, 36) and also promotes the right of children to relax and play (Article 31) and to have healthy food and clean water (Article 24)

In Llanrhidian we teach and develop mental health through:-

- ▶ Explicit teaching the science self regulation
- ▶ A cluster mentally healthy schools model
- ▶ Self regulation areas and resources
- ▶ Flexible timetables to meet pupils' needs
- ▶ Effective links with outside agencies
- ▶ Daily Checkins
- ▶ Daily gratitude times
- ▶ Growth Mindset
- ▶ Restorative Practice



MENTAL HEALTH & WELLBEING

Website
Link

Contents
Page

Links to Children's Rights

Language Literacy and Communication enables children and young people to experience their rights of cultural participation (particularly Articles 14, 15, 30 and 31) and also their participatory rights around freedom of expression, understanding information and decision making (Articles 12, 13 and 17).

In Llanrhidian we teach and develop Welsh as a second language through:-

- ▶ Explicit teaching of sentence patterns
- ▶ Daily use of incidental Welsh
- ▶ Daily "Slot Drillio"
- ▶ School events to promote "Cynefin"
- ▶ Tric a Clic reading scheme
- ▶ Powys Scheme
- ▶ Participating in Urdd Activities
- ▶ Promoting Siarter Iiaith – The Welsh Language Charter.
- ▶ Bilingual assemblies
- ▶ Pupil voice groups – "Dreigiau Llanrhidian"



WELSH LANGUAGE DEVELOPMENT

Website
Link

Contents
Page

Our village school has 110 years of history, all of which is underpinned by an outstanding community ethos. This is “Cynefin”, a Welsh word that cannot be directly translated into English, but means a place of multiple belongings.

We have all heard the African proverb “it takes a village to raise a child”. As the adult community that surrounds our children we all have the responsibility to ensure that we build aspirations, ambition, and positivity in our learners.

It is vital that our learners' experiences are grounded in an understanding of their identities and their world to form *their* cynefin. This will not only allow them to develop a strong sense of their own identity and well-being, but to develop an understanding of the diversity of others' and make connections with people, places and histories elsewhere in Wales and across the world.

We are fortunate to have an outstanding community of pupils, parents, staff, governors and beyond. We work together, striving to give our children cynefin, so that they feel that they really do belong.



At Llanrhidian, our curriculum is meticulously designed to ensure every learner embodies the four core purposes. We have successfully developed a progressive continuum of dispositions, supporting the holistic development of essential skills throughout the school. These skills are foundational to the four purposes, which are at the heart of our educational philosophy. Llanrhidian's World of Work aims to provide real-life contexts for students, enabling them to apply these skills in diverse situations. This initiative, collaboratively developed by staff and pupils, encompasses various roles that foster independence and practical life skills. Some of these roles include:

- Capten Cinio
- Capten Chwarae
- Capten Darllen
- Capten Attendance
- Capten Plant Bach
- Caffi Cynefin

Students, with support from staff and parents, apply for roles that align with their skill sets, considering attributes such as reliability, time management, initiative, and patience. We continuously seek innovative ideas to enhance our World of Work program. If you have any suggestions, we welcome your input!

#LLANWOW



Contents
Page

At Llanrhidian, Pod Pengwin, Pysgodyn and Prycop will go on at least one trip per term, which ranges from exploring our local community to venturing further afield. Occasionally, parents may be asked to contribute financially towards these trips, as without their support, the school could face challenges in facilitating these valuable opportunities. We constantly seek parental involvement to enrich our pupils' learning experience, and volunteering for these excursions is a wonderful way to contribute. If you are interested in supporting us in this capacity, kindly inquire at the school office about becoming a volunteer.

TRIPS & VISITS



[Contents
Page](#)

At Llanrhidian Primary School we recognise that all pupils come to school at different stages of development and with different needs. Whilst many factors contribute to the range of difficulties experienced by some children, we believe that much can be done to overcome them by parents, teachers and pupils working together.

Pupils who meet our criteria for having ALN will be supported by class teachers, teaching assistants other adults and their learning environment.

- ▶ The ALN aims of the school
- ▶ To meet the needs of all pupils through excellent teaching strategies, classroom organisation and differentiation.
- ▶ To have a whole school Universal Provision that addresses the needs of all pupils.
- ▶ To ensure that all pupils have access to a broad and balanced curriculum
- ▶ To ensure that early identification of a pupil's needs is made
- ▶ To ensure that ALN pupils take as full a part as possible in all school activities
- ▶ To use a Person Centred practice where the pupil, parents, school staff and outside support agencies are involved from the beginning in planning actions and ways forward to support pupils with ALN.
- ▶ To ensure that parents are kept regularly informed of their child's progress
- ▶ To ensure that ALN pupils are involved, where practical, in decisions affecting their future ALN provision
- ▶ To Work in partnership with parents, pupils and other agencies e.g. Educational Psychologist, Speech Therapists, Social Workers, School Nurse etc.

ADDITIONAL LEARNING NEEDS (ALN)

[Website
Link](#)

[Contents
Page](#)

At Llanrhidian, we value the environment as an extra resource to support learning and well-being. We are creative with our use of space to ensure pupils' interests and needs are met. Here are just some of the innovative development that have enhanced our environment:-

- ▶ Spill out zones to support pupils' well-being and mental health
- ▶ Music at the beginning, end and throughout the day
- ▶ Well maintained grounds with wild flowers, seasonal plants and vegetables
- ▶ Wild wood area
- ▶ Wild flower area (summer months)
- ▶ Fire Pit
- ▶ Poly tunnel
- ▶ Marquee and sensory circuit (winter months)
- ▶ Outdoor picnic and work tables



OUR PHYSICAL ENVIRONMENT

Contents
Page

Our Assessment is underpinned by children's rights principles. It is in line with the principle of using a range of assessment effectively to plan **next steps** for learners. It is fully inclusive, and considers the progress of all learners in both a **formative** and **summative** assessment context.

We believe that effective assessment provides information to improve teaching and learning. We give our children **regular and consistent feedback** on their learning so that they understand what it is that they need to do better. This allows us to base our planning on a detailed knowledge of each pupil.

We give parents two written reports on their child's progress so that teachers, pupils and parents are all working together to raise standards for all our learners.

The aims and objectives of assessment in our school are:

- ▶ To enable our learners to demonstrate what they know, understand and can do in their work;
- ▶ To help our learners understand what they need to do next to improve their work;
- ▶ To allow teachers to plan work that accurately reflects the needs of each pupil;
- ▶ To provide regular information for parents that enable them to support their child's learning;
- ▶ To provide the head teacher and governors with information that allows them to make judgements about the effectiveness of the school.

ASSESSMENT

Our Learn, Understand and Apply model of progression provides a consistency of language across the North Gower Partnership.



Contents
Page

We are very committed to ensuring that parents are kept fully informed of school events, key issues and your child's progress. This takes place in the following ways:

- ▶ Annual open evening and/or formal meetings with pod teachers. These are arranged to discuss progress and set targets for future development.
- ▶ A bi-annual written school report which comments on the progress made in every area of learning and experience.
- ▶ Class teachers make themselves available to parents whenever possible at the beginning and the end of the school day.
- ▶ Nursery Open Days ([Website Link](#))
- ▶ A weekly blog to inform parents of key events
- ▶ [A website calendar of events](#)
- ▶ [Pod Pages](#)
- ▶ Emails
- ▶ Instagram
- ▶ Texts



KEEPING PARENTS INFORMED

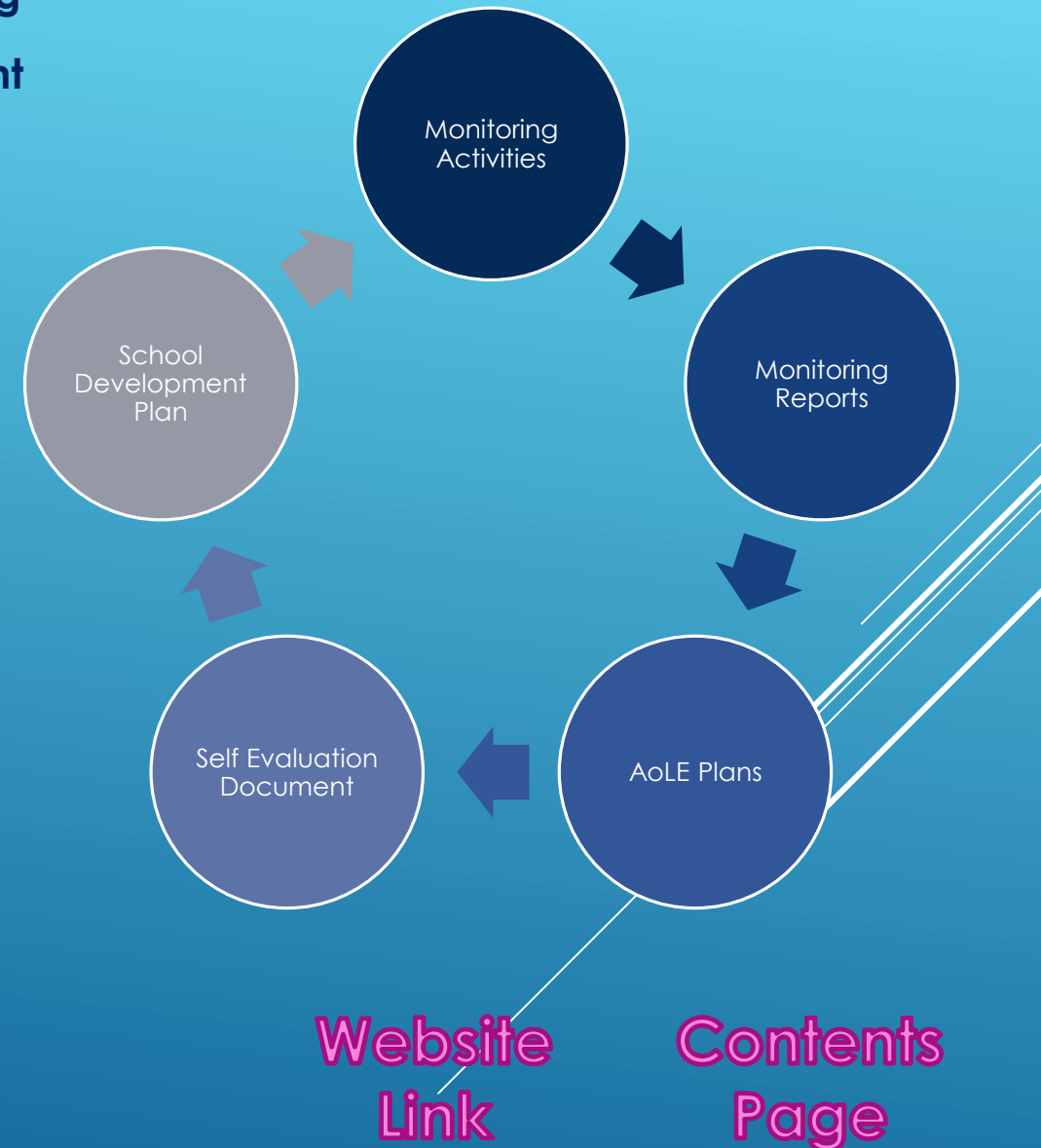
Website
Link

Contents
Page

Self-evaluation contributes to our school improvement by providing an accurate assessment of how well our school is performing and crucially what needs to be done next. It helps identify improvement priorities and leads to evidence-based school improvement planning, which results in clear benefits for pupils.

There are 5 important aspects to our robust and embedded self-evaluation:-

- ▶ Self evaluation processes are an embedded feature of our school improvement cycle
- ▶ Self evaluation involves all staff
- ▶ Effective communication and sharing of areas for improvement with all stakeholders
- ▶ Clear links between staff development and school priorities
- ▶ Culture of high challenge and low threat



SCHOOL IMPROVEMENT

Children's Rights

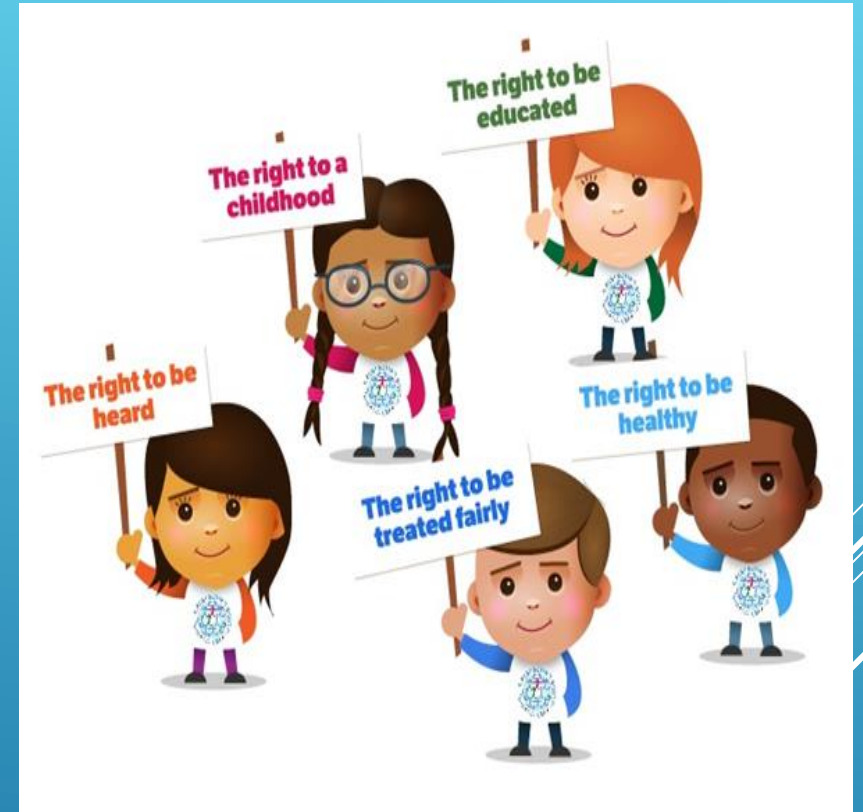
Children and young people have 42 rights under the United Nations Convention on the Rights of the Child (UNCRC).

These 42 rights give children and young people what they need to grow up happily, healthily and safely.

In 2011 Wales became the first country in the UK to make the UNCRC part of its domestic law.

The principles of a Children's Rights Approach are:

- ▶ Embedding children's rights - at Llanrhidian this means that all policies are underpinned by the UNCRC, and all our community know and understand about children's rights.
- ▶ Equality and Non-discrimination - at Llanrhidian we make sure that every child aspires to be the best they can be. This is encapsulated in our school Vision and Mission statements.
- ▶ Empowering children - At Llanrhidian pupils are actively involved in planning their curriculum.
- ▶ Participation - At Llanrhidian adults and pupils share the decision making and together drive policy and change.
- ▶ Accountability - Llanrhidian Primary School is held to account for how pupils experience their rights by the governing body and pupil voice groups.



CHILDREN'S RIGHTS

Website
Link

Contents
Page

The welfare of all pupils in this school is a priority. We believe that our school provides a caring, supportive and safe environment which promotes the social, physical and moral development of each child by the provision of a curriculum and ethos which promotes self-worth, confidence and independence. No child can learn effectively and reach their potential unless they feel secure.

Staff are kept fully updated with safeguarding procedures, and mandatory training is fully adhered to.

The designated safeguarding officers for the school are Donna Caswell, Sarah Archard, Lisa Marchant and Nicola Gosney. Any concerns regarding child protection will be dealt with in accordance with the All Wales Child Protection Procedures. Jane Houston, Chair of Governors, is the designated governor for child protection.

All policies are reviewed regularly and are available on the school website.

SAFEGUARDING



[Safeguarding Policy](#)

[Contents Page](#)

The Governors are committed to ensure high standards of health, safety and welfare for all staff, pupils and visitors. The school has a security system installed which controls access. Regular risk assessments are carried out and reviewed to ensure the safety of all involved with our school.

During the school day gates are locked during teaching time and visitors/parents must use the entrance down the side lane and use the intercom system. Visitors are requested to sign the electronic 'Visitors' log.

Fire Drills – At Llanrhidian, we believe safety is paramount and want to ensure our pupils are confident and well-prepared in the unlikely event of a fire. To achieve this, we conduct termly fire drills. Guided by our dedicated pod staff, these drills are tailored to be age-appropriate, teaching our pupils the importance of safety and responsibility in a calm and supportive environment.

Lock Down Drills – In the extremely rare circumstances when the school needs to 'lock down,' it is essential that our pupils feel fully prepared. To ensure this, Llanrhidian conducts an annual lockdown drill. These drills are designed to be reassuring and instructive, providing students with the knowledge and confidence to stay safe and composed under the careful supervision of our experienced staff.

The school's [Health and Safety Policy](#) and [Security Policy](#) can be requested at any time.



HEALTH & SAFETY

Health &
Safety Policy

Contents
Page

Llanrhidian Primary School has a very positive behaviour culture. We are very proud of the excellent behaviour of our learners who are frequently praised by visitors and when visiting other places for their beautiful manners and general behaviour. Good behaviour is a necessary condition for effective teaching and learning to take place.

The most meaningful and positive form of discipline is self-discipline. We work hard at Llanrhidian School to instil this in our learners.

The response to misbehaviour is always positive and will depend on the nature of the misdemeanour, and the age and maturity of the pupil. We deal with any misbehaviour using a restorative practice approach. This enables the pupil to explain their thoughts and reasons for their behaviour choice through 3 questions.

- ▶ What happened?
- ▶ How were you feeling?
- ▶ What could we do next time?

This enables pupils to be listened to and also makes them aware of the effect that their actions have on others.



POSITIVE RELATIONSHIPS

Positive
Relationships Policy

Contents
Page

The school's Governing Body has a complaints procedure established to deal with complaints made by parents and others in respect of the performance of duties and or exercise of powers by the LA or by the Governing Body.

Any parents, or other concerned person, who may have a complaint should first discuss their concern formally with the head teacher. The head teacher and staff are committed to dealing with parental concerns, to resolving parental misunderstandings and to providing real solutions as speedily as practicable. We are also committed to learning from any mistakes made in a spirit of mutual respect and understanding. We offer parents the opportunity to comment on matters relating to the school in a regular survey or when considered necessary.

All members of staff are encouraged to respond personally to concerns which parents and children raise with them. If considered appropriate, your concerns will also be passed to the head teacher.

Should the matter not be resolved, the complainant may be asked to put their issue in writing, in line with the school's complaints policy. The school's complaint policy is available from the school office.



PUTTING THINGS RIGHT

Website
Link

Complaints
Policy

Contents
Page

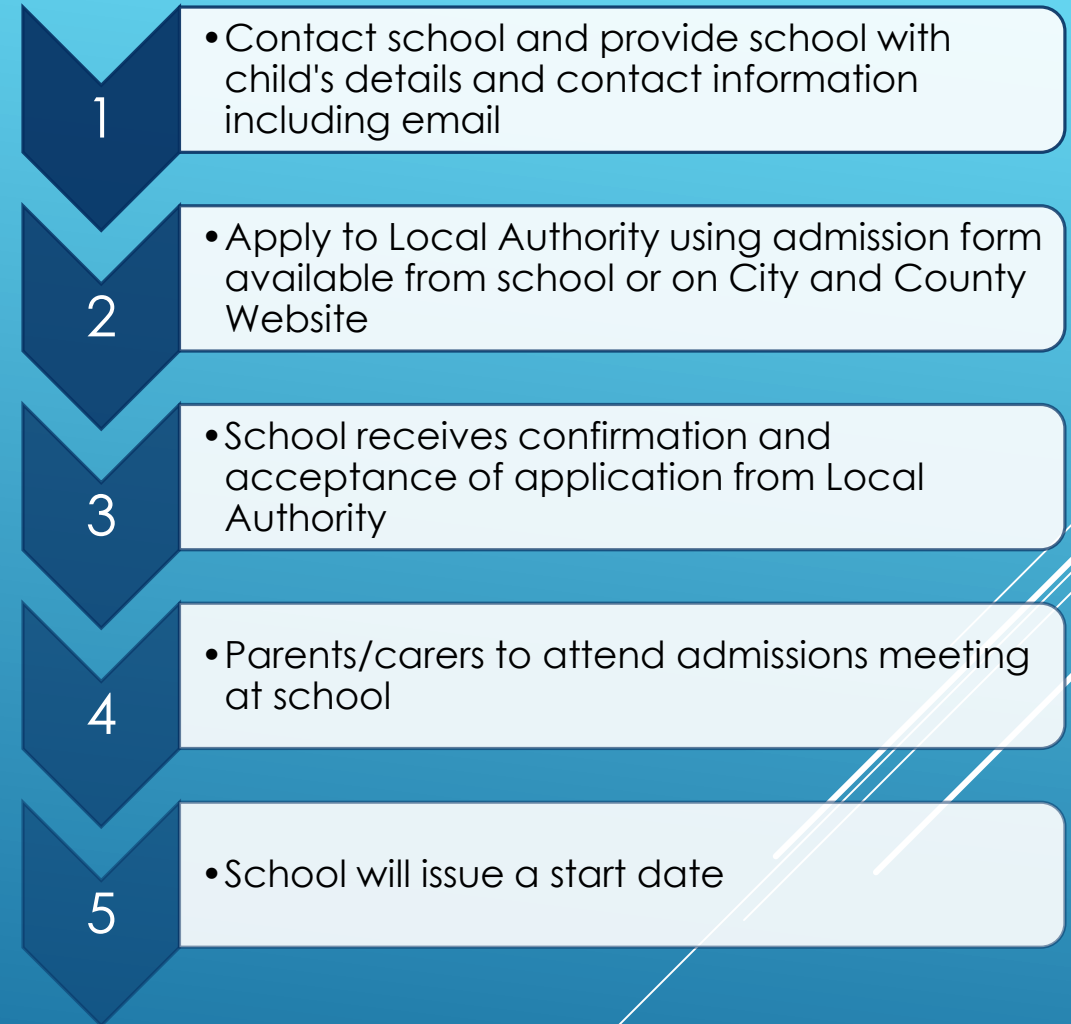
If you would like your child to attend Llanrhidian Primary School, please contact the office at least term before.

Each current nursery child, about to commence full time education, will be invited to apply for a place at their catchment school maintained by the Local Authority.

Children are admitted full time to the Reception class in the September after their fourth birthday. All children are admitted to school in line with the LA's policy.

Parents can either apply in writing for a place at the catchment school or express a preference for a placement at an alternative school. Requests for a preferred placement will be granted unless to do so would prejudice the provision of efficient education or the efficient use of resources.

During an admission meeting the school will ask parents and pupils to agree to a home school agreement. This an electronic form retained by the school in link with GDPR policy.



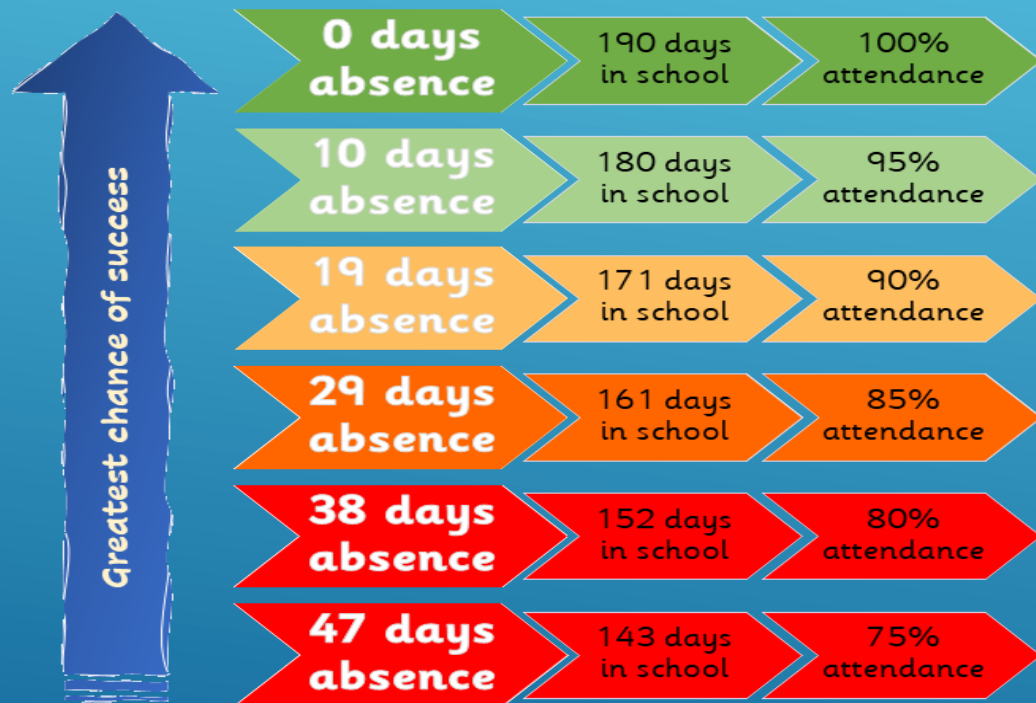
ADMISSIONS

[Website Link](#)

[Contents Page](#)

Please contact the school immediately if your child is absent. The school has a first day response policy and will text or phone parent or carers if the absence is not communicated to the school. The EWO tracks attendance carefully and contacts families where attendance is below an acceptable level. Please understand that children cannot reach their potential academically and socially if attendance is low.

Our school target is 96.85%



ATTENDANCE

Website
Link

10 Tips to help you and your child make going to school easier

- ▶ Help them get their school bag packed the night before
- ▶ Make sure their uniform is ready especially after the holidays or weekend
- ▶ Get them to bed at a reasonable time so they have a good night's sleep
- ▶ Set the alarm clock early enough to allow plenty of time to get ready properly
- ▶ Make sure they have some breakfast if they are not attending breakfast club
- ▶ Remind them to set off for the bus or start walking early enough so they won't be late: punctuality is important
- ▶ Check to make sure they have everything they need – books, PE kit, dinner money etc.
- ▶ If your child is finding the work too hard speak to the teacher
- ▶ Talk to your child about that they did in school today
- ▶ If you or your child are unhappy about the way they are treated by staff or other pupils, contact the school straight away

Parents and carers should aim to get their child to school by 8.50, 5 minutes before registration at 8.55am. For safeguarding reasons, pupils who arrive late must be brought to the gate by an appropriate adult. School staff will sign your child in as late.

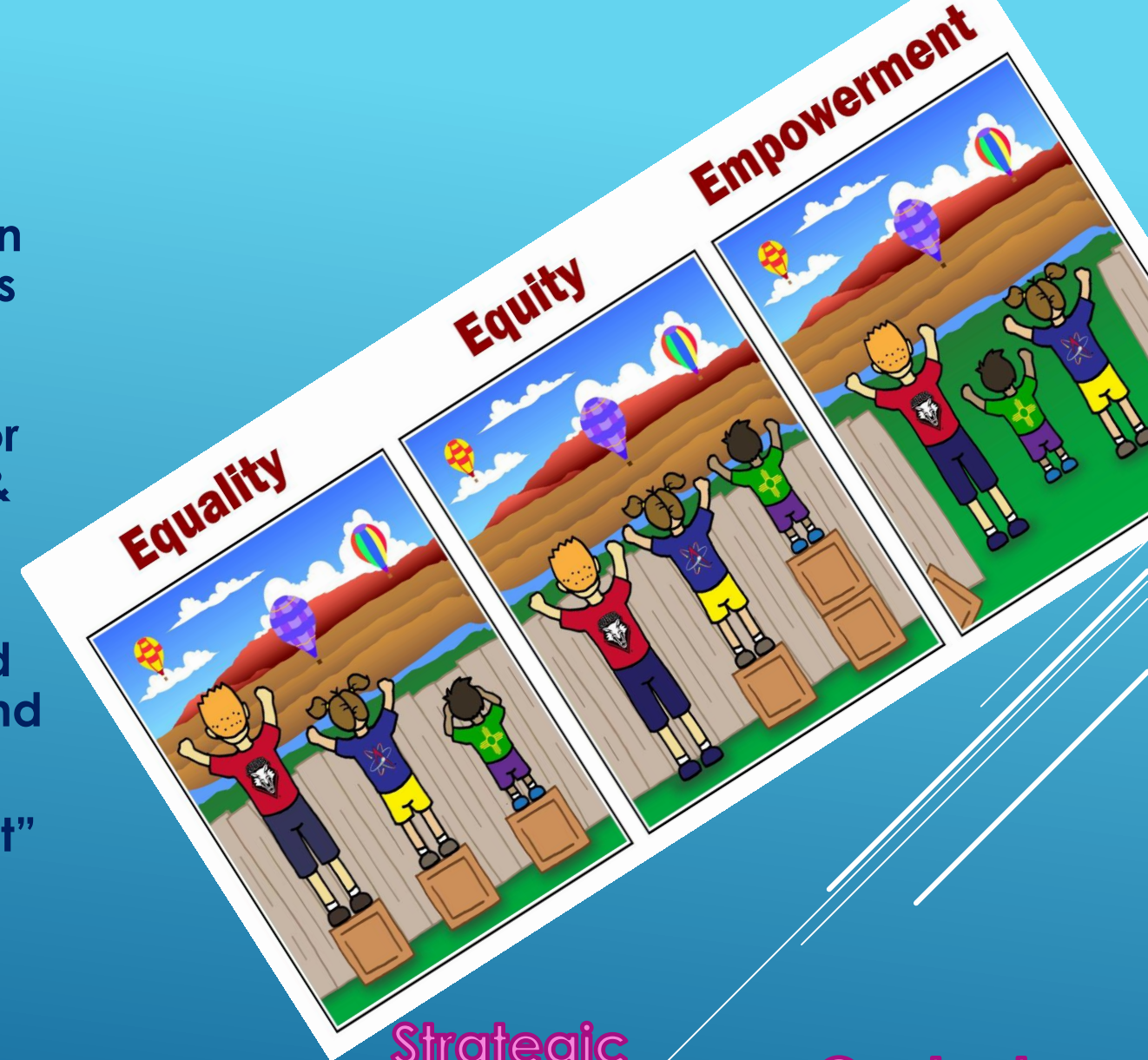
Contents
Page

At Llanrhidian Primary School, we are committed to ensuring equity of education and opportunity for all pupils, staff, parents and carers receiving services from the school, irrespective of disability, race, gender, age, sexual orientation, religion or belief, gender reassignment, pregnancy & maternity, marriage and civil partnership.

We aim to develop a culture of inclusion and diversity in which all those connected to the school feel proud of their identity and able to participate fully in school life.

At Llanrhidian we strive for “empowerment” by reducing barriers for our learners.

EQUAL OPPORTUNITIES



Strategic
Equality
Plan

Contents
Page

LINKS WITH THE COMPREHENSIVE – GOWERTON SCHOOL

The school has extremely well developed links with our partner comprehensive, Gowerton/and its partner primaries, through The North Gower Partnership.

Regular Liaison meetings take place at head teacher level, Year 6 class teacher level, and subject area level.

Year 6 children attend several social/athletic/curriculum/team-building events at the Comprehensive during the year, and many of these events are also open to children of Years 3 to 5 as well. Children also play inter-school friendly games.

Year 6 children spend three days at the comprehensive to familiarise themselves with the new staff/buildings.

Gowerton School has key members of staff whose responsibilities involve close contact with partner primary schools. These include the Year 6 teacher, the tutor of Year 7, the head of additional learning needs, and the person responsible for record keeping and assessment.

The school works closely with all partner primary schools for a number of cluster events.



“The North Gower Partnership is an effective and long standing collaboration between the feeder schools to Gowerton Comprehensive School.”

<http://www.gowerton.com/>

TRANSITION TO SECONDARY SCHOOL

Website
Link

Contents
Page

Under the terms of the Education Act 1996, the amount of time to be spent per subject cannot be prescribed. However, schools must allow enough taught time to deliver a broad and balanced curriculum that includes all statutory requirements.

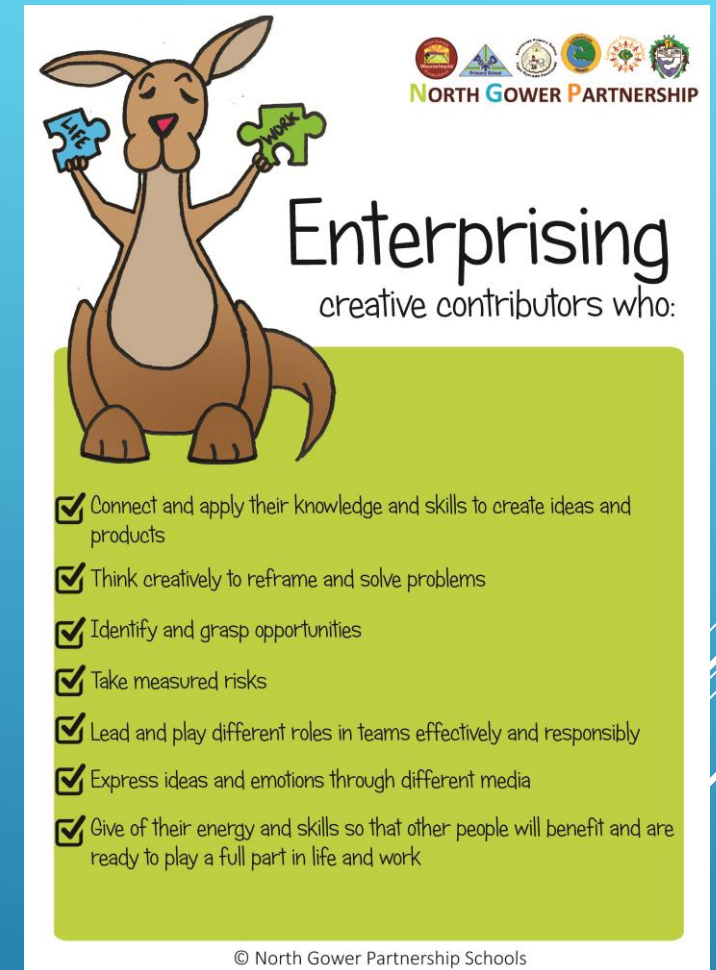
Total annual taught time is based on a 190-day (38-week) school year and on the recommended minimum weekly lesson times set out in Welsh Office Management of the School Day Circular 43/90, which are 21 hours for pupils in years 1 and 2, 23.5 hours for pupils in years 3 to 6 and 25 hours for pupils in years 7 to 11. Schools may provide a longer school day than the minimum if they wish.

Teaching Times in Llanrhidian:

Reception to Year 2: receive 23 hours 20 minutes

Year 3 to Year 6: 23 hours 45 minutes

SESSION TIMES & TERM DATES



Website
Link

Contents
Page

The School Health Nurse Service provides education, support, advice and assistance in all issues related to health and public health for school aged children and the wider school community.

They work closely with school to provide evidence based sessions in the classroom in line with the RSE curriculum. School nurses are also available to discuss and advise on a 1:1 basis if appropriate.

Our School Nurse is Lowrie Orchard

Contact Details:

9.00am – 5.00pm

Monday to Friday

01792 531248 or 618877

Medical Consent forms are available on the school website or from the school office.



HEALTH MATTERS

Website
Link

Contents
Page

The Governing Body has decided that parents be invited to make voluntary contributions towards the benefit of the school or to support a particular activity. This will happen occasionally to enable an activity to take place. Without such contributions, some events will be unable to take place. The school will fund class trips and activities whenever possible.

In instances where parents are in receipt of free school meals, or other benefits, they can request financial assistance with such charges.



CHARGING AND REMISSIONS

[Charging
Policy](#)

[Contents
Page](#)

School uniform is worn by all full time pupils, and is optional for nursery pupils. A wide range of school uniform can be purchased from Bergoni or Wipeout. Unbranded supermarket alternatives can also be worn.

Parents are strongly encouraged to dress their children in school uniform. The benefits of wearing uniform have been clearly identified in terms of better discipline and pride taken in the school and a greater sense of identity and community within the school. Wearing uniform leads to less competition between children in terms of what they wear to school, and there are no disagreements between parents and children about what a child should wear to school.

Occasionally, children lose or misplace articles of clothing. Please help us by marking all garments, P.E. kits, shoes etc. with your child's name.

Second hand uniform is strongly encouraged. Please ask in the office if you require this or would like to donate.



You can now order uniform straight from our suppliers. Just follow the link below.

<https://www.bergoni.co.uk/collections/llanrhidian-primary>



UNIFORM & PE KIT

Website
Link

Contents
Page

Lunch runs from 12:00 until 12:55 each day. Pupils eat their lunch in their pods with their friends.

In the Summer months pupils have the option of eating on the school picnic benches outside.

We ask parents of children who bring a packed lunch to school to make every effort to ensure that the packed lunch contains a healthy eating and drinking selection. This is consistent with our Health Promoting Policy.

To pay for lunch all parents and carers must use the iPay app. This enables parents to pay on line. The City and County of Swansea have a no debt policy, so this must be pre-paid.



LUNCHES

Website
Link

Website
Link - sQuid

Contents
Page

Here at Llanrhidian we are committed to helping all our children to become healthy, confident individuals who are able to make their own healthy choices, now and throughout their whole lives.

Our school is very involved in the “Swansea Health Promoting Schools Scheme”.

All food and drink prepared for the children during school time is expected to follow Swansea County Council healthy eating guidelines.

During break times we have a ‘fruit only’ policy. Children are encouraged to bring their own fruit in from home.

We ask parents of children who bring a packed lunch to school to make every effort to ensure that the packed lunch contains a healthy eating and drinking selection. This is consistent with our Health Promoting Policy. Healthy options are always made available during PTA functions. Staff are also encouraged to follow Health Schools guidelines.

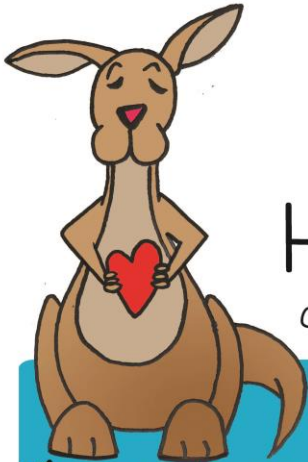
Drinking plenty of cold, fresh water helps to develop concentration skills and the well-being of the individual. Children are encouraged to bring a water bottle into school and children have access to cold fresh drinking water throughout the school day. They will not have access to squash throughout the day, however you may wish to pack a non fizzy drink with their packed lunch.


We ask parents not to send in birthday cake or sweets to share with the class to help us promote a consistent message of healthy eating to the children.

HEALTHY SCHOOLS

Website
Link

Contents
Page




NORTH GOWER PARTNERSHIP

Healthy

confident individuals who:

- ☒ Have secure values and are establishing their spiritual and ethical beliefs
- ☒ Are building their mental and emotional well-being by developing confidence, resilience and empathy
- ☒ Apply knowledge about the impact of diet and exercise on physical and mental health in their daily lives
- ☒ Know how to find the information and support to keep safe and well
- ☒ Take part in physical activity
- ☒ Take measured decisions about lifestyle and manage risk
- ☒ Have the confidence to participate in performance
- ☒ Form positive relationships based upon trust and mutual respect
- ☒ Face and overcome challenge
- ☒ Have the skills and knowledge to manage everyday life as independently as they can and are ready to lead fulfilling lives as valued members of society

© North Gower Partnership Schools

Our website is the best place for the latest information. It is updated every week with the latest news and events, and your child's pod pages are continually refreshed with new learning you can access at home.

Pupils use our website in school as part of their learning, so please use this site together to ensure you get the most out of your Llanrhidian School experience.

OUR WEBSITE



[Website
Link](#)

[Contents
Page](#)