

Place Value – Purple Chilli



What numbers are represented in the place value charts?

a)

Millions	Thousands			Ones		
O	H	T	O	H	T	O
● ●	● ● ●	●	● ● ● ● ●	● ●	● ● ● ● ● ●	● ● ●

b)

Millions	Thousands			Ones		
O	H	T	O	H	T	O
● ●		●	● ● ● ● ●	● ●	● ● ● ●	● ● ●

c)

Millions	Thousands			Ones		
O	H	T	O	H	T	O
● ● ● ●			●			● ● ●

What are the values of the bold digits?

a) 2,950

c) 195,000

e) 1,432,310

b) 37,300

d) 71,903

f) 3,256,705

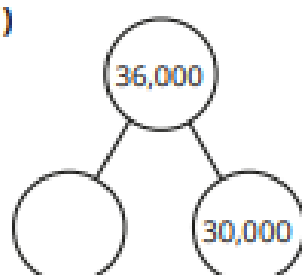
Here is a number.

Millions	Thousands			Ones		
O	H	T	O	H	T	O
3	2	5	4	9	0	7

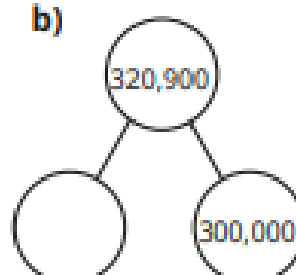
- What is the number?
- What is 400,000 greater than the number?
- What is 20,000 less than the number?

Complete the part-whole models and number sentences.

a)



b)



- $23,700 = 20,000 + 3,000 + \boxed{}$
- $104,039 = 100,000 + \boxed{} + \boxed{} + \boxed{}$
- $\boxed{} = 200,000 + 40,000 + 9,000 + 70 + 3$

Mo uses 7 counters to make a 6-digit number on a place value chart.

- Write five numbers Mo can make.
- What is the greatest number Mo can make?
- What is the smallest number Mo can make?
- What do you notice about the sum of the digits?

Dexter has written a set of clues to describe a number.

- It has 5 tens.
- It has one more thousand than it does tens.
- It has 7 digits.
- It starts with a 9
- The rest of the digits are zeros.

What is the number?

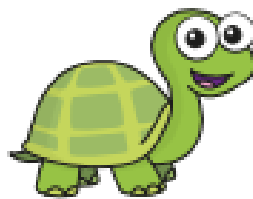
Write the numbers in words.

- | | | |
|---------------------|---------------------|---------------------|
| a) 1,436,634 | c) 5,207,845 | e) 6,207,805 |
| b) 1,463,643 | d) 5,207,045 | f) 6,270,817 |

Write the numbers in numerals.

- a)** one million, twenty-four thousand, three hundred and sixty-one
- b)** six million, one hundred and eight thousand, six hundred and twelve
- c)** two and a half million
- d)** three-quarters of a million

Tiny is writing the number 5,246,153 in words.



five million two hundred
forty six thousand and
one hundred fifty three

- a)** What mistakes has Tiny made?
- b)** Write the number 5,246,153 correctly in words.

Here are some clues to a 7-digit number.

- There is nothing in the thousands or hundreds columns.
 - The tens digit is 1 less than the millions digit.
 - The ones digit is 1 less than the tens digit.
 - The hundred-thousands digit is 4
 - The digit sum is 15
- a)** What could the number be?
 - b)** Write the number in words.