

1 Work out the missing numbers.

a) £1 =  p

e) £  = 300p

b) £2 =  p

f) £  = 600p

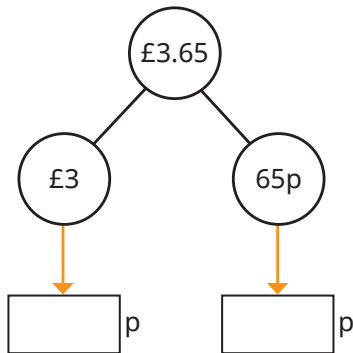
c) £9 =  p

g) £  = 1,000p

d) £12 =  p

h) £  = 2,000p

2 Use the part-whole model to convert £3.65 to pence.



3 Convert the amounts to pence.

a) £1.24

d) £10.24

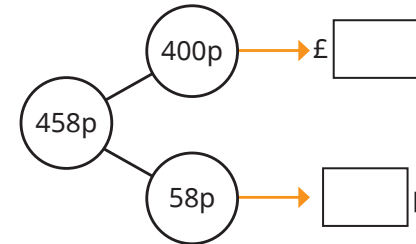
b) £2.99

e) £12.24

c) £5.55

f) £21.24

4 Use the part-whole model to convert 458p to pounds and pence.



5 Convert the amounts to pounds and pence.

a) 231p

c) 491p

e) 1,014p

b) 149p

d) 914p

f) 1,114p

6 Match the amounts that are equal.

Work out the missing digits.

460p

£\_\_ and \_\_p

£4.62

420p

£4 and 62p

£4.06

\_\_p

£4 and 6p

£4.20

462p

£4 and 20p

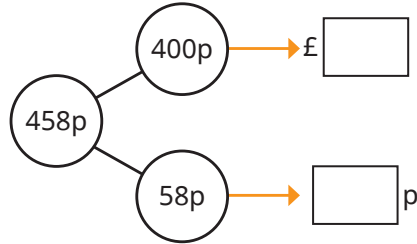
£\_\_.

426p

£4 and 26p

£4.60

4 Use the part-whole model to convert 458p to pounds and pence.



5 Convert the amounts to pounds and pence.

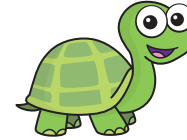
- |         |         |           |
|---------|---------|-----------|
| a) 231p | c) 491p | e) 1,014p |
| b) 149p | d) 914p | f) 1,114p |

6 Match the amounts that are equal.

Work out the missing digits.

460p	£__ and __p	£4.62
420p	£4 and 62p	£4.06
__p	£4 and 6p	£4.20
462p	£4 and 20p	£__.__
426p	£4 and 26p	£4.60

7 Tiny is converting amounts into pounds and pence.



505p = £5.5  
970p = £9.7

- a) What mistakes has Tiny made?  
b) Complete the conversions.

101p = £ <input style="width: 50px; height: 20px;" type="text"/>	£4.60 = <input style="width: 50px; height: 20px;" type="text"/> p
230p = £ <input style="width: 50px; height: 20px;" type="text"/>	£10.04 = <input style="width: 50px; height: 20px;" type="text"/> p

8 Ron has £5.82

He is given one more coin.

How much money could Ron have now?

Find all the possible amounts.

Write your amounts as pence.

9 Annie has this money.



Which amounts show how much money Annie has got?

£10.7	1,070p	£1.07
107p	£10.07	1,007p