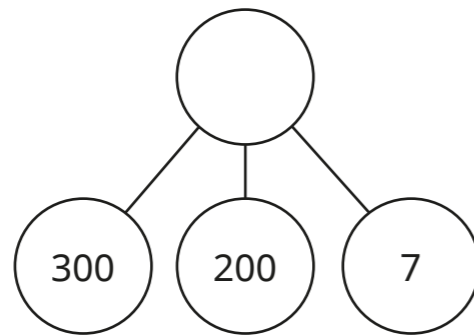
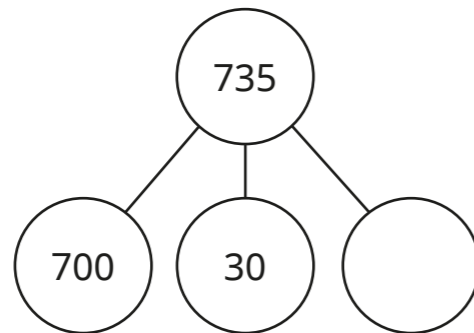


## Place value

Name: \_\_\_\_\_

1 Complete the part-whole models.

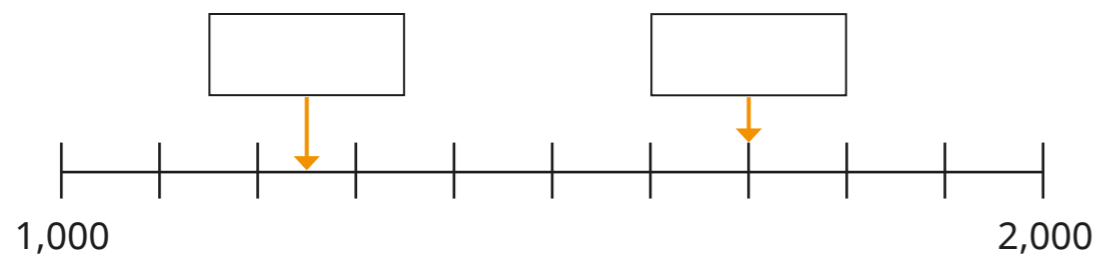


1 mark

1 mark

2 marks

2 What numbers are the arrows pointing to?



3 What number is shown on the place value chart?

Thousands	Hundreds	Tens	Ones
1,000 1,000			1 1 1 1

1 mark

1 mark

Draw more counters to make the number 3,016

4 Each number has the digit 5 in a different place.

Match the numbers to the values.

511

5 thousands

5,103

5 hundreds

6,950

5 tens

695

5 ones

2 marks

- 5 Use the digit cards to make an even number between 7,000 and 8,000



1 mark

- 6 Complete the sentences.

57 rounded to the nearest 10 is

1 mark

7,199 rounded to the nearest 1,000 is

1 mark

9,364 rounded to the nearest 10 is

1 mark

- 7 Complete the number track.

6,100		6,200	6,250	6,300
-------	--	-------	-------	-------

1 mark

- 8 Kim makes a 4-digit number.

- The hundreds digit is a 7
- The tens digit is one more than the thousands digit.
- The sum of all the digits is 10

What is Kim's number?

1 mark

- 9 Which addition is equal to 5,042?

Tick your answer.

$50 + 42$

$50 + 40 + 2$

$5,000 + 400 + 2$

$5,000 + 40 + 2$

1 mark